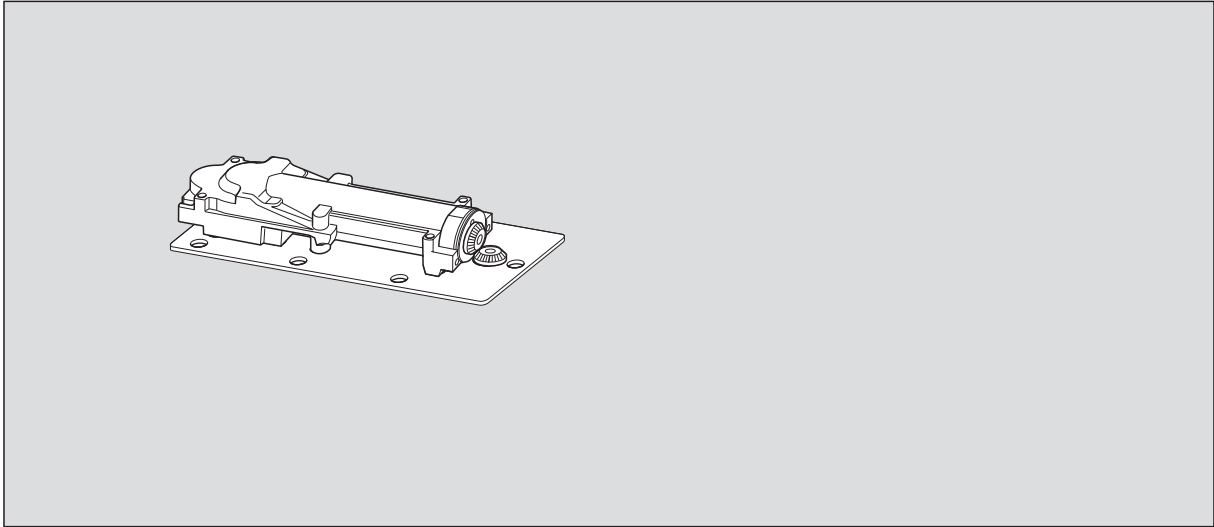
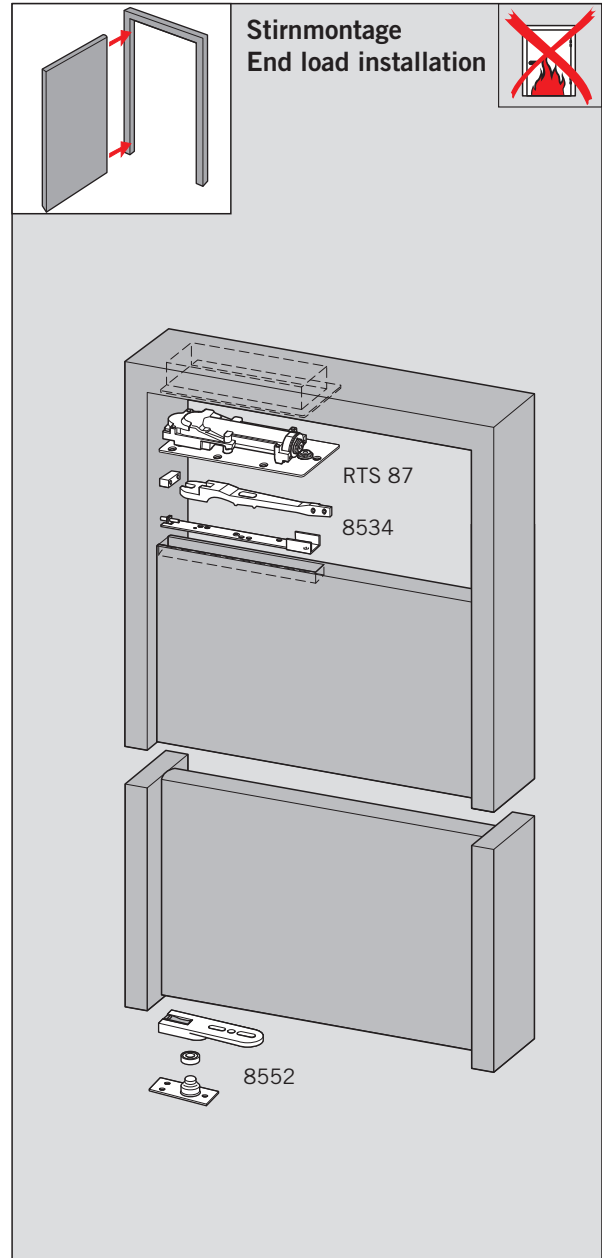
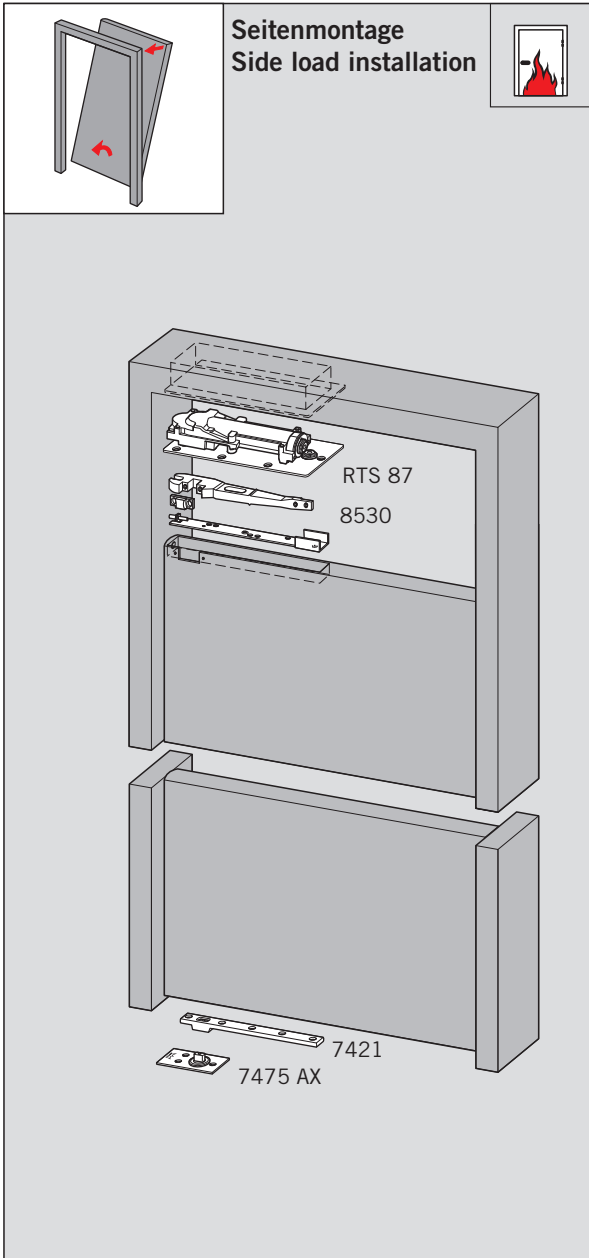


WN 058349 45532, 11/12

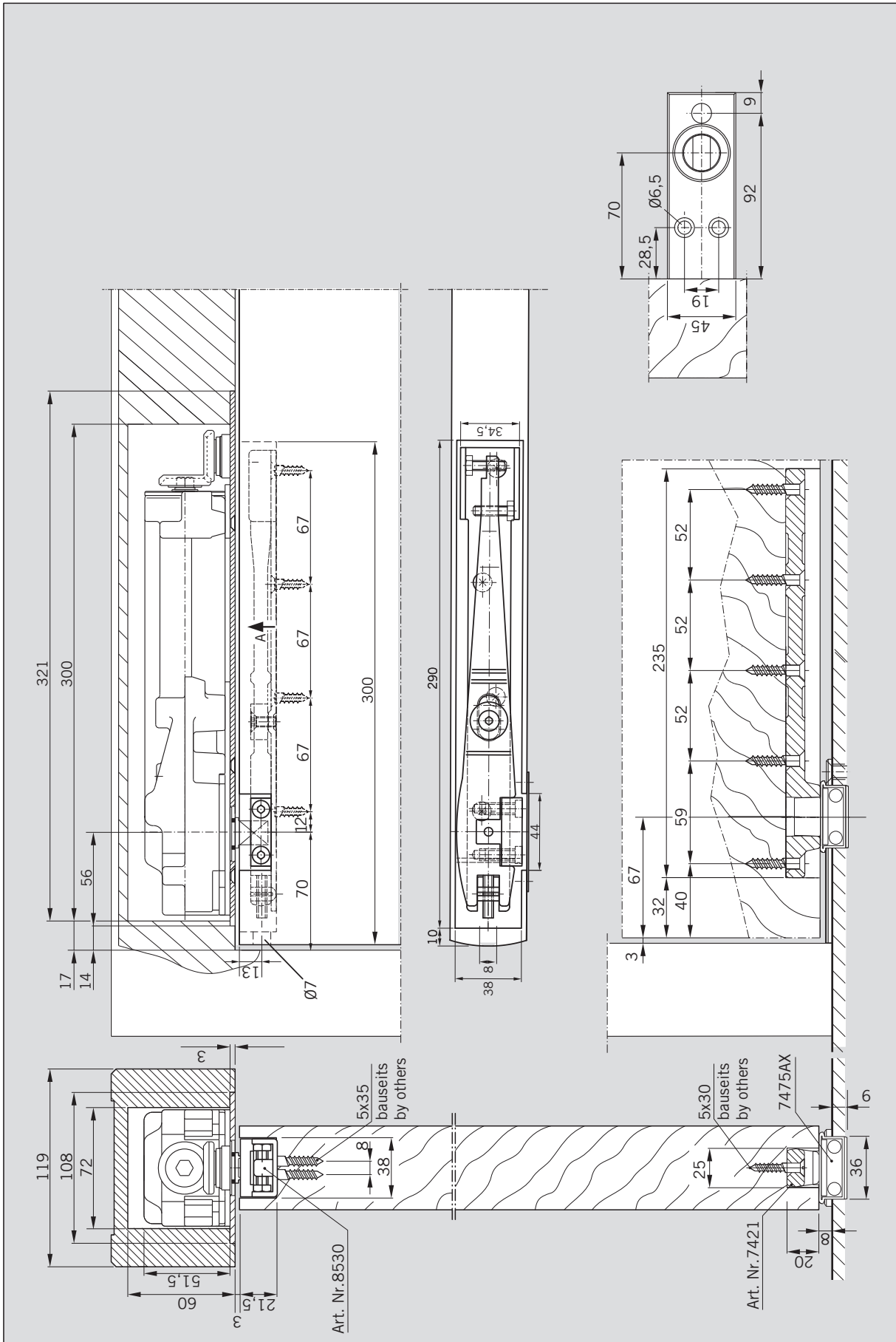


CE	DORMA GmbH + Co. KG		05	
	Postfach 4009 58 247 Ennepetal			
0432 - BPR-0076		EN 1154:1996+A1:2002	3 8	1 4
Dangerous substances: None				



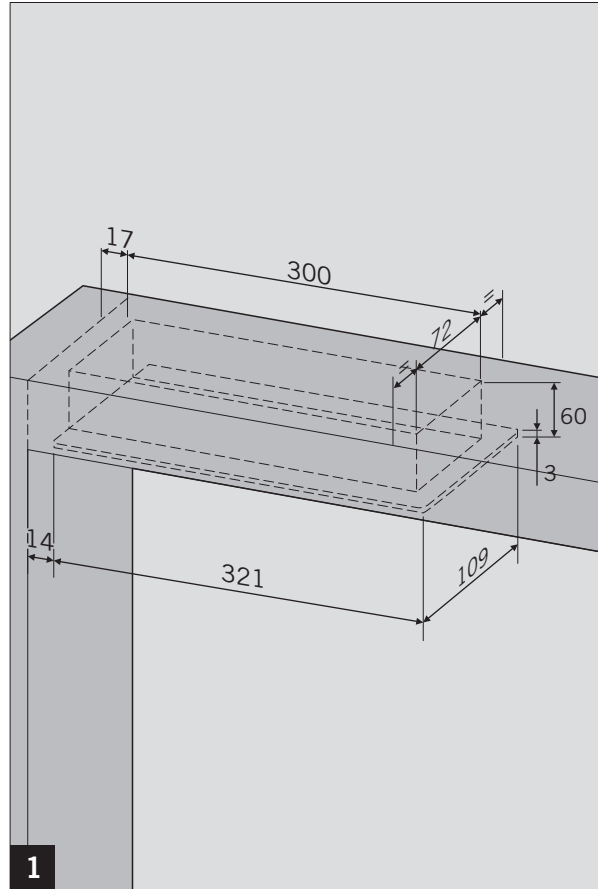
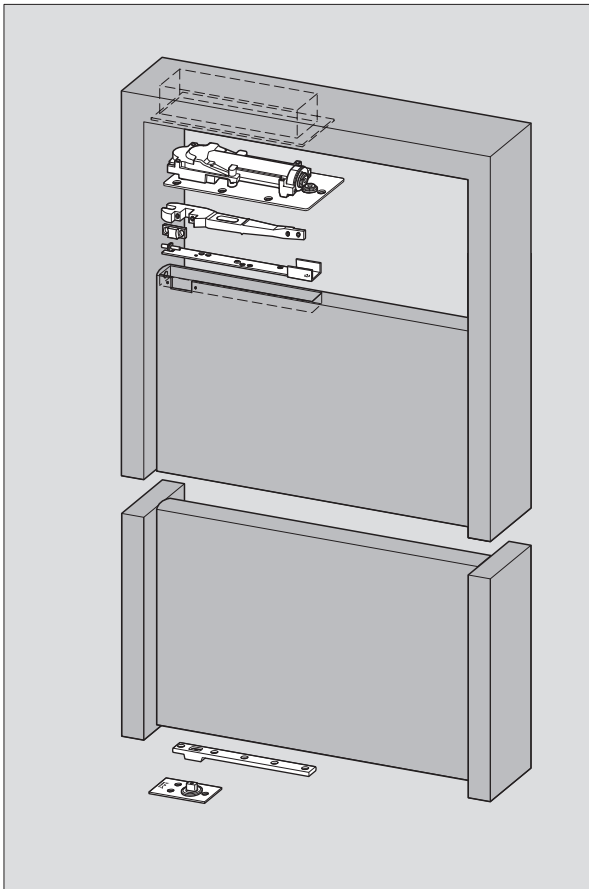
RTS 87

Seitenmontage / Side load installation

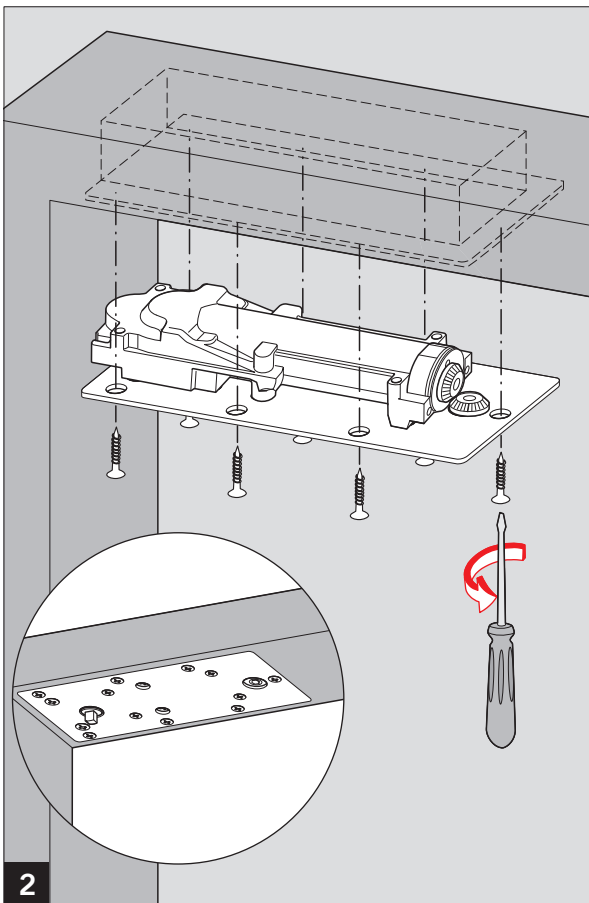


RTS 87

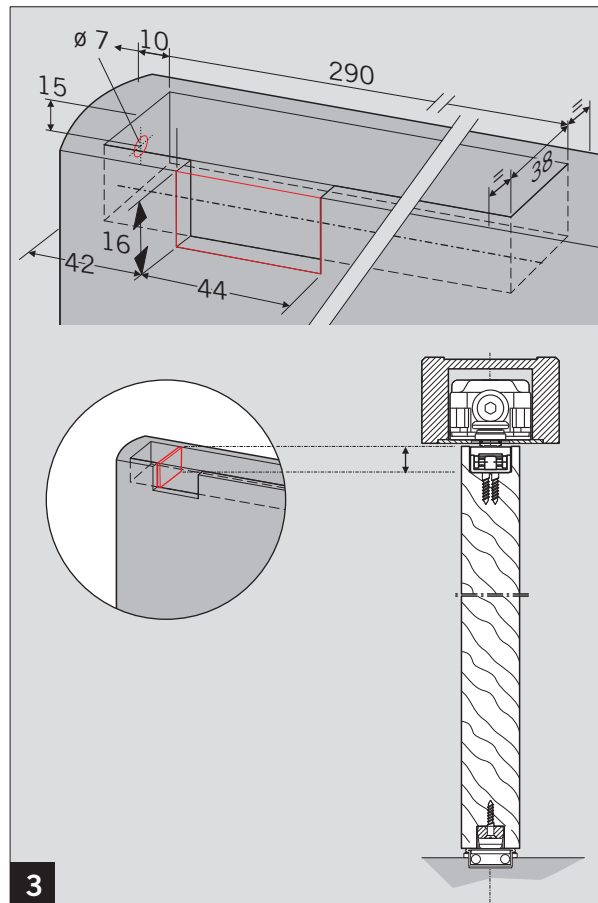
Seitenmontage / Side load installation



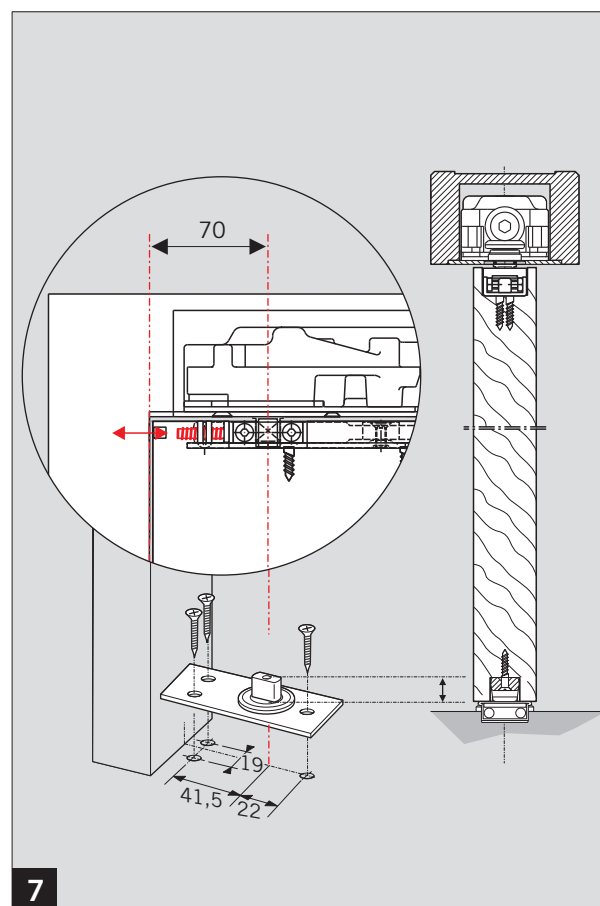
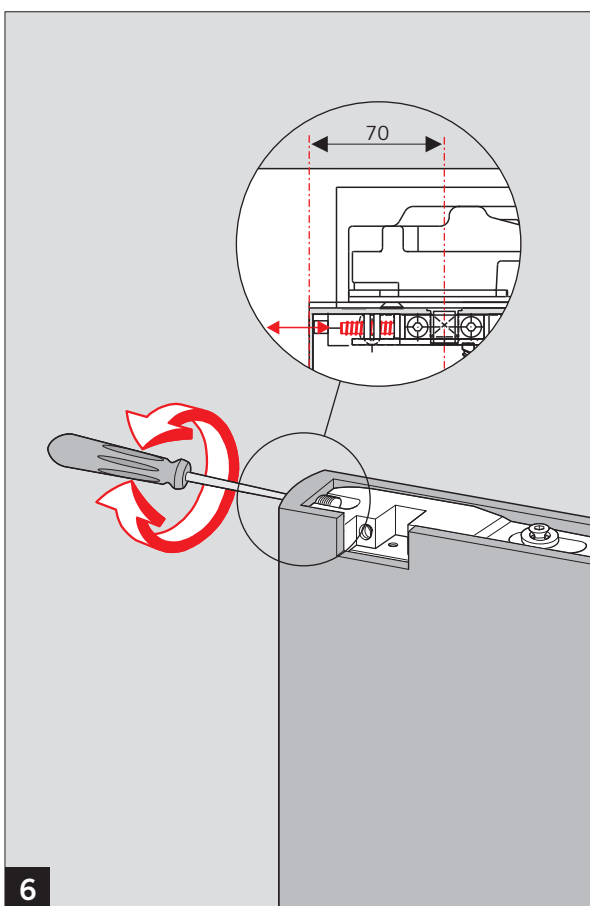
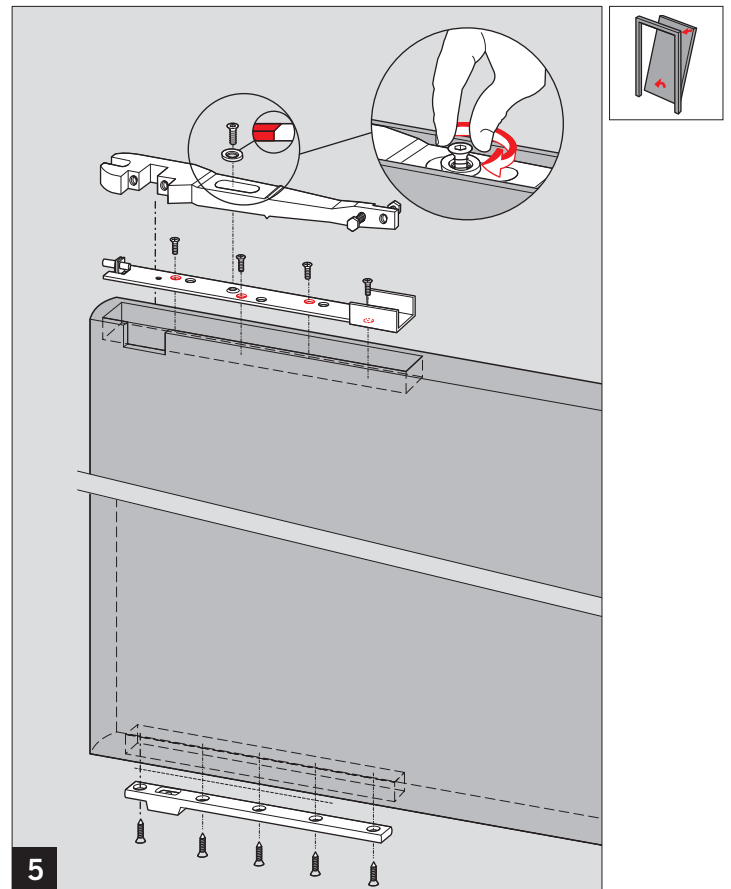
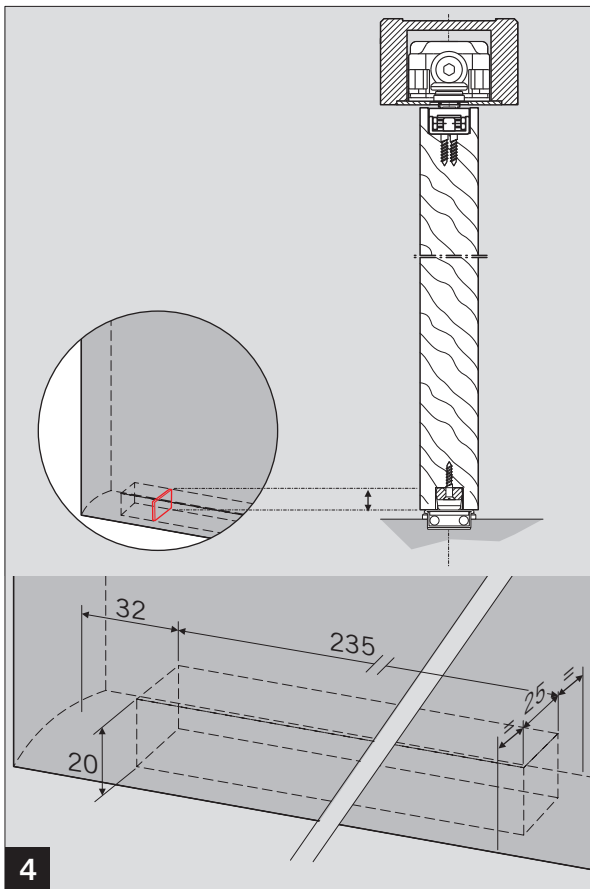
1

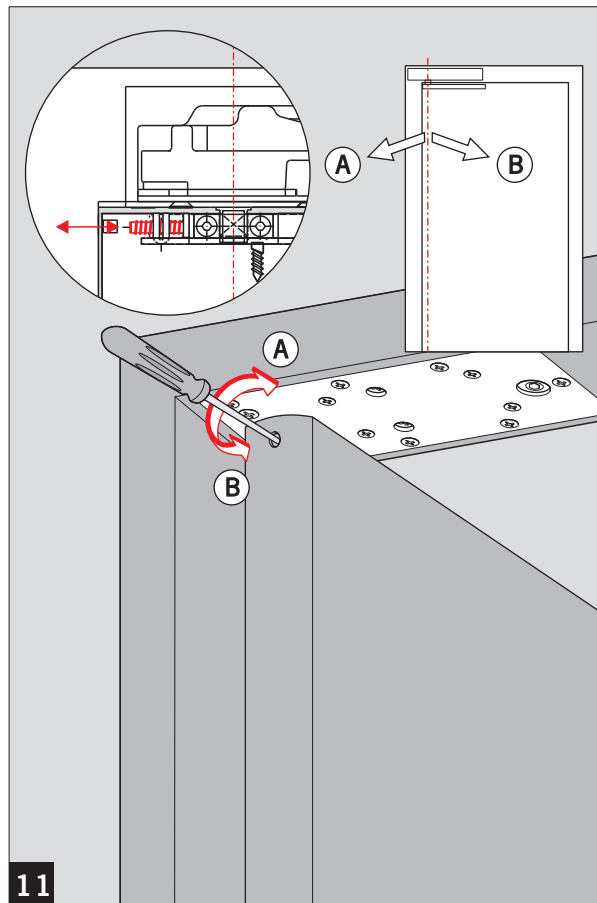
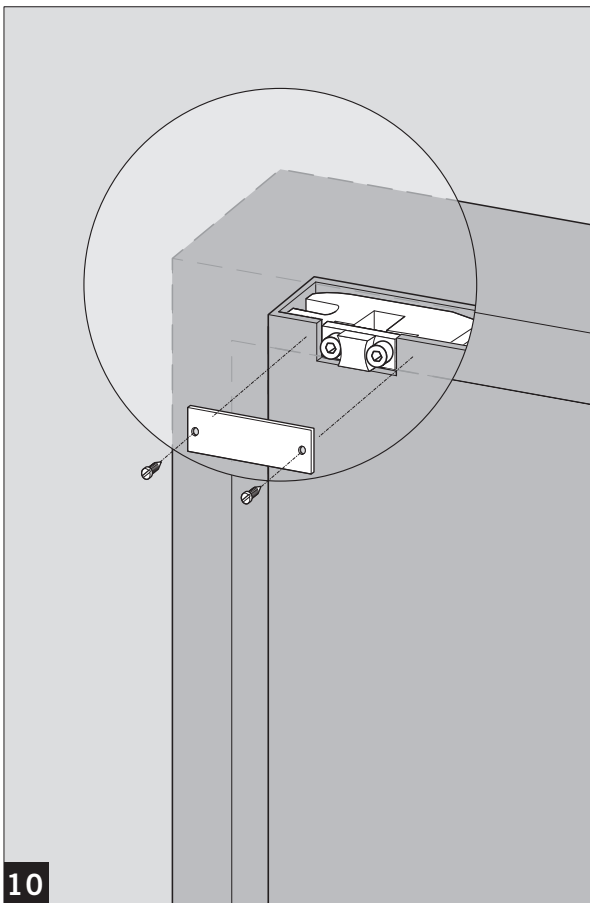
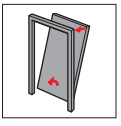
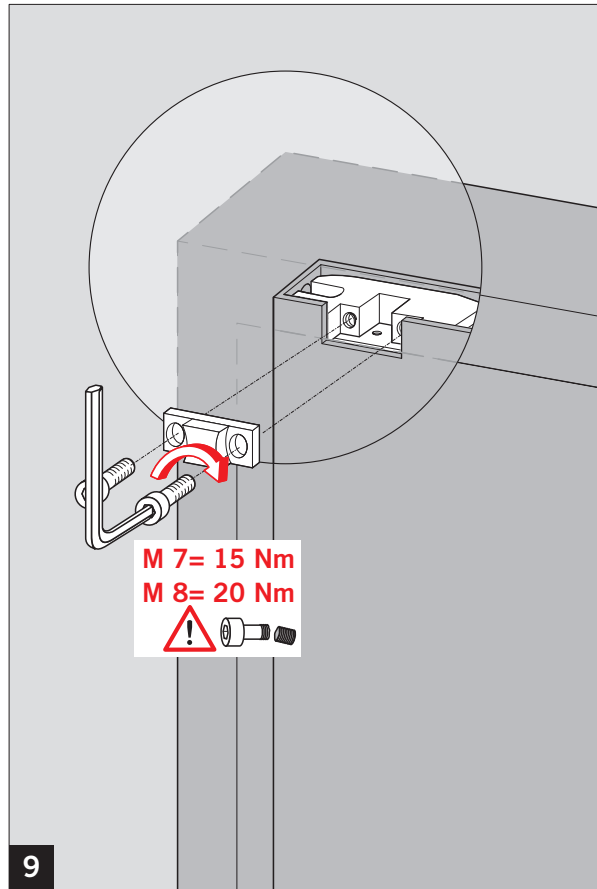
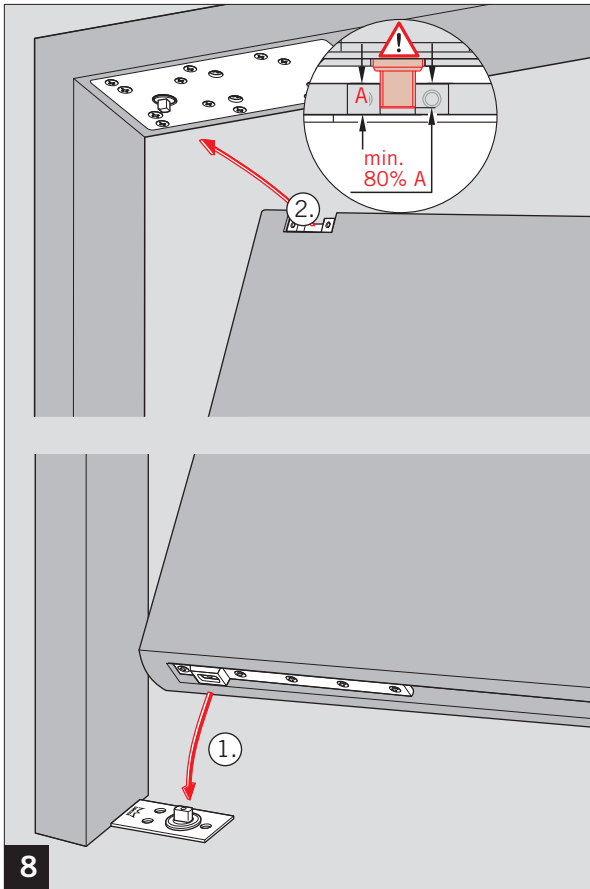


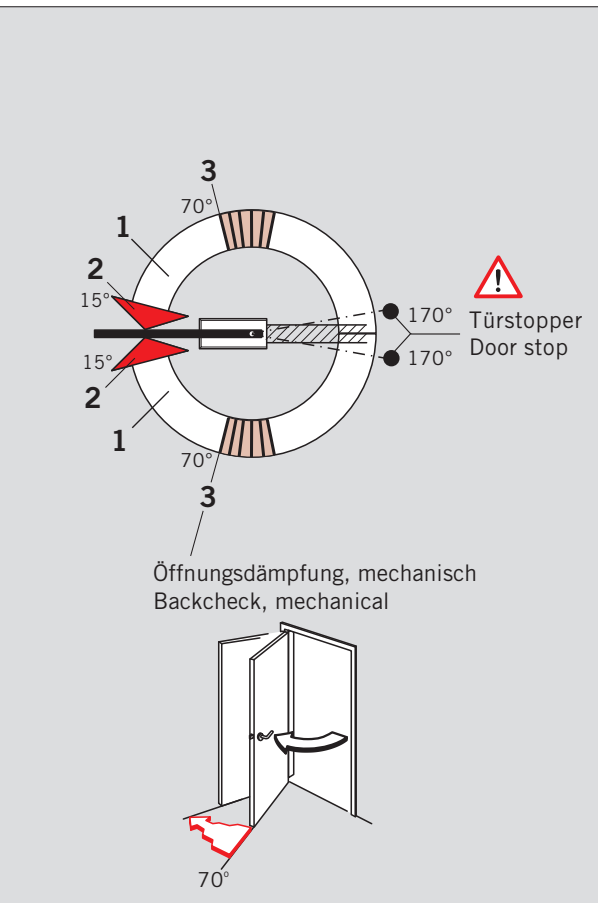
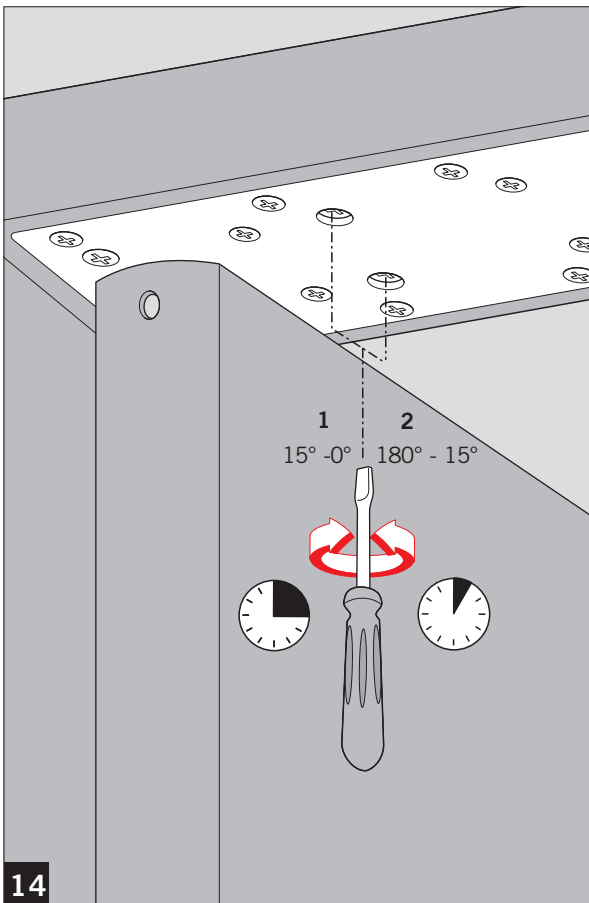
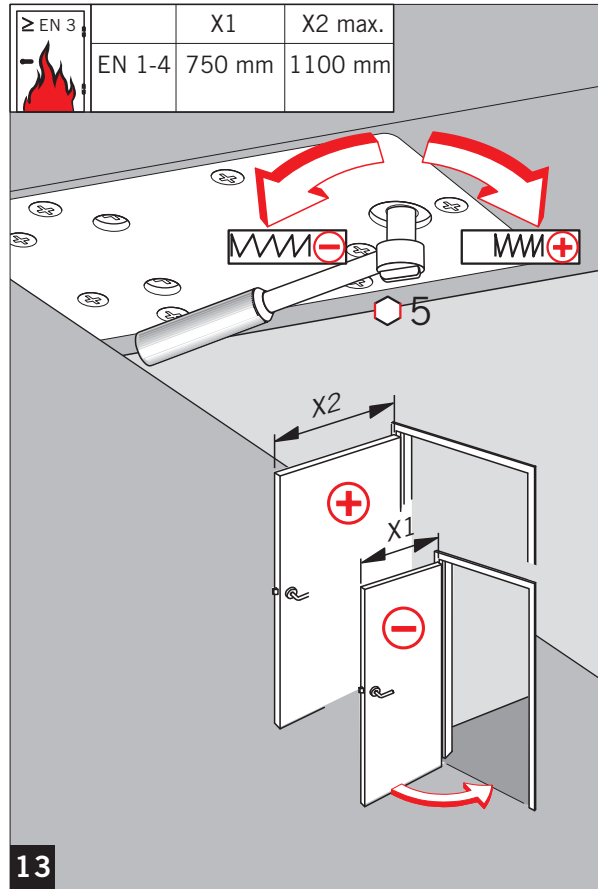
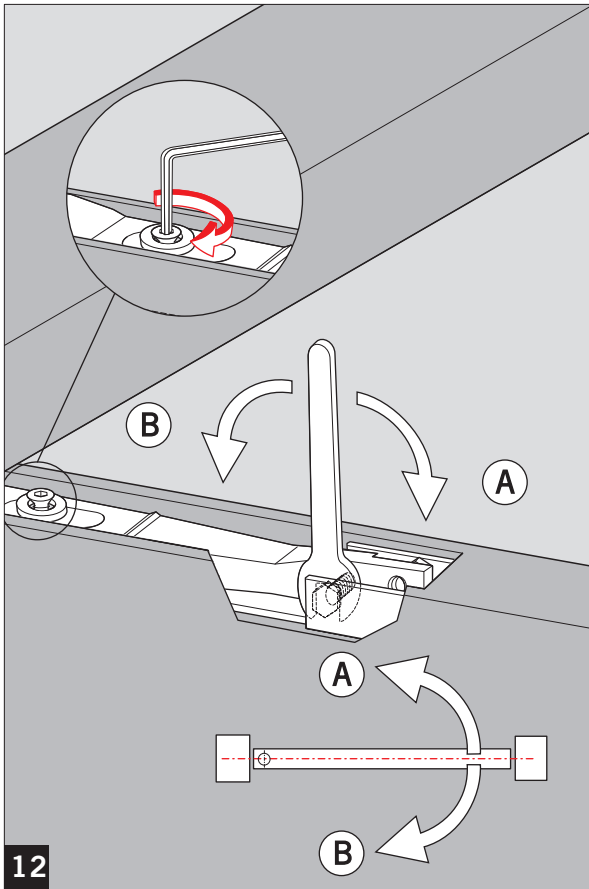
2



3

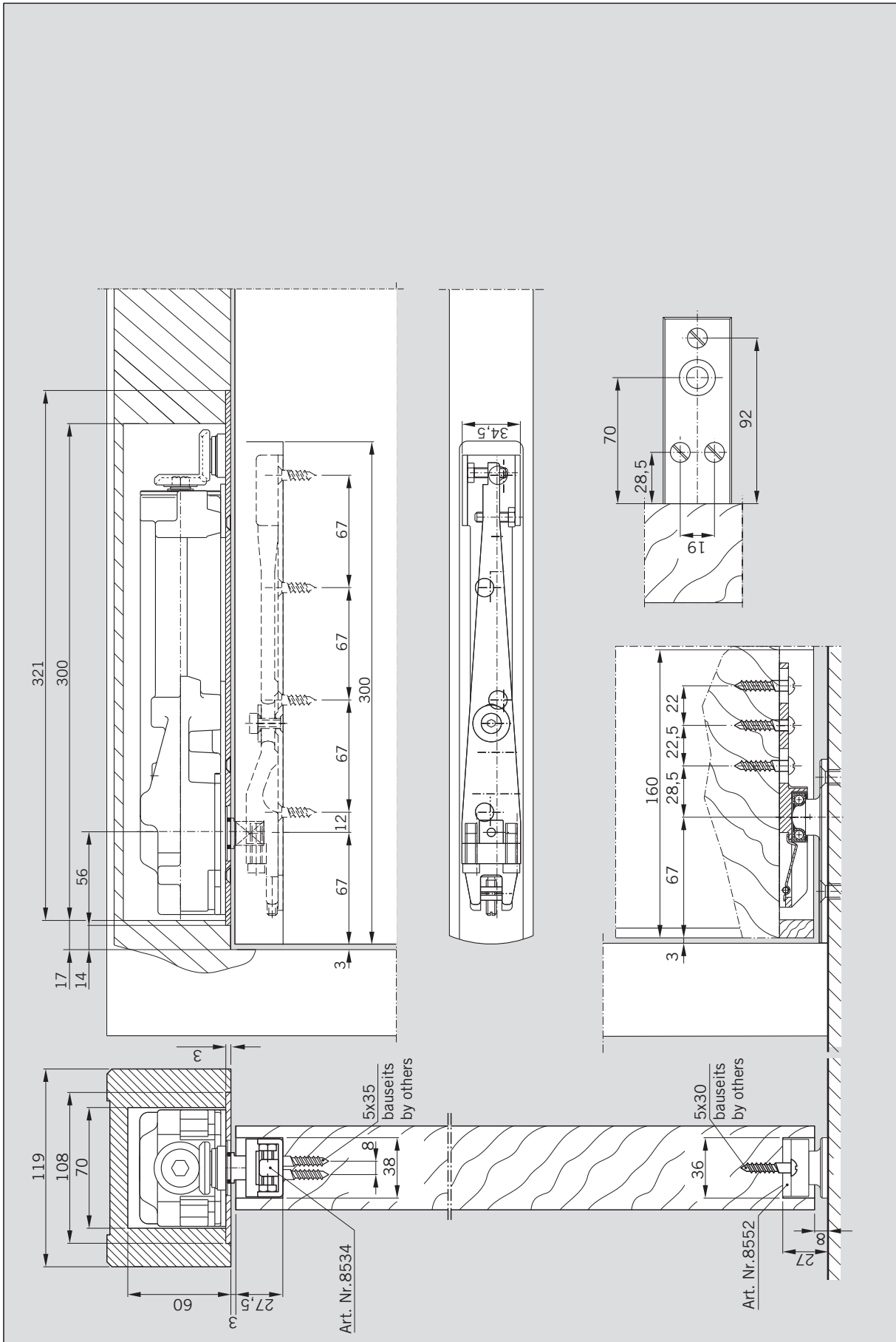
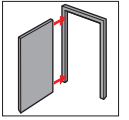






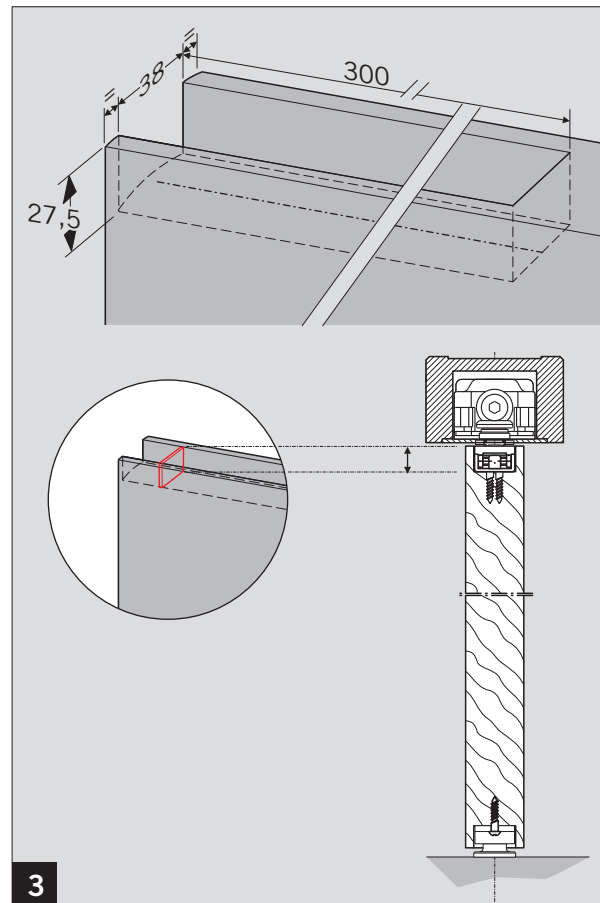
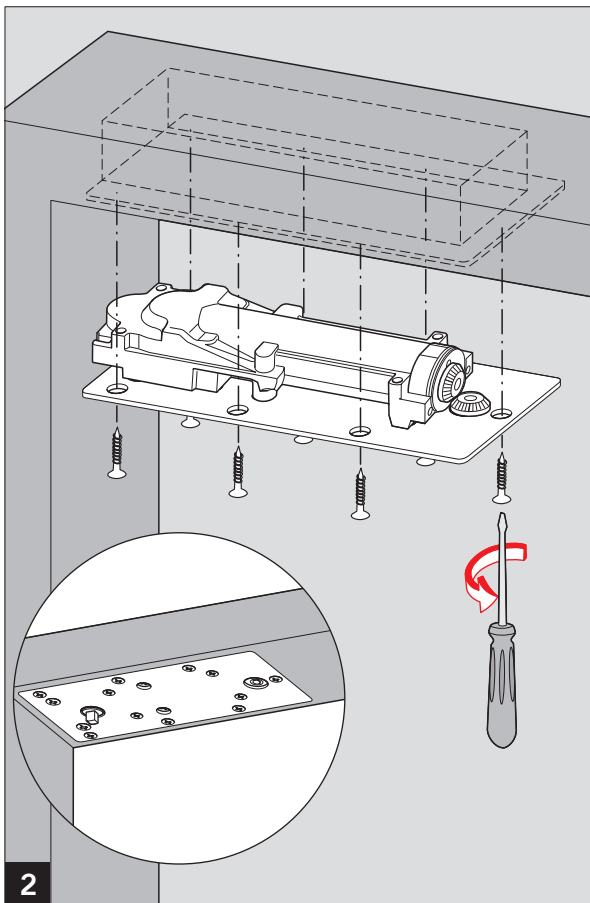
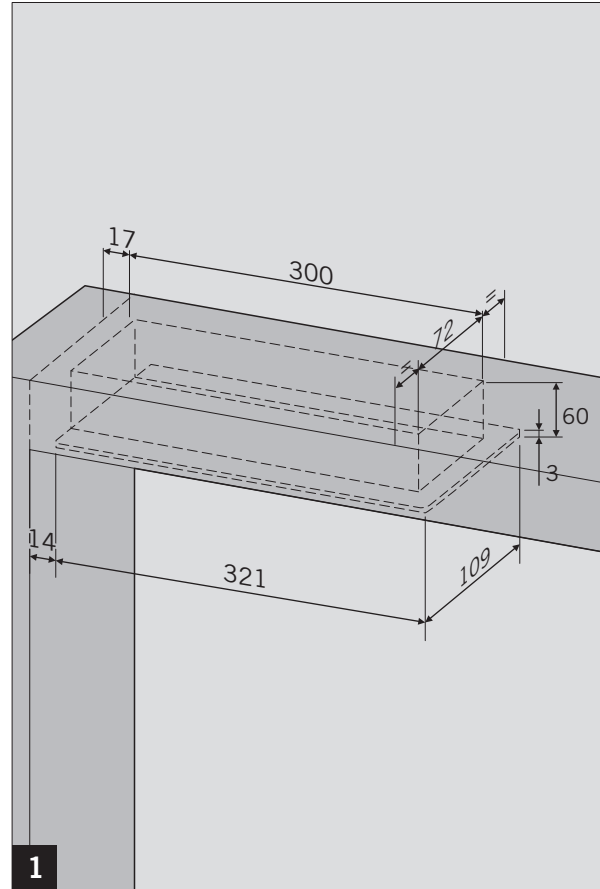
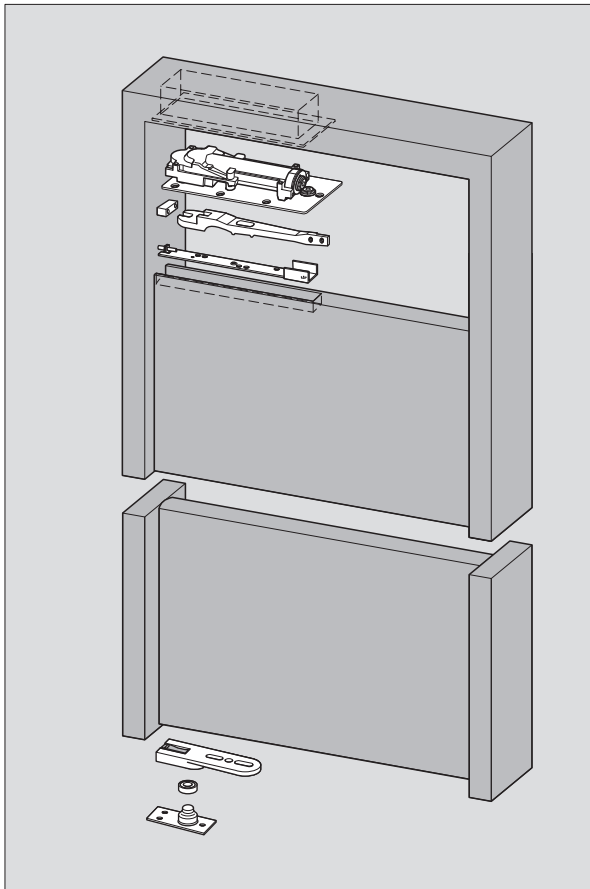
RTS 87

Stirnmontage / End load installation



RTS 87

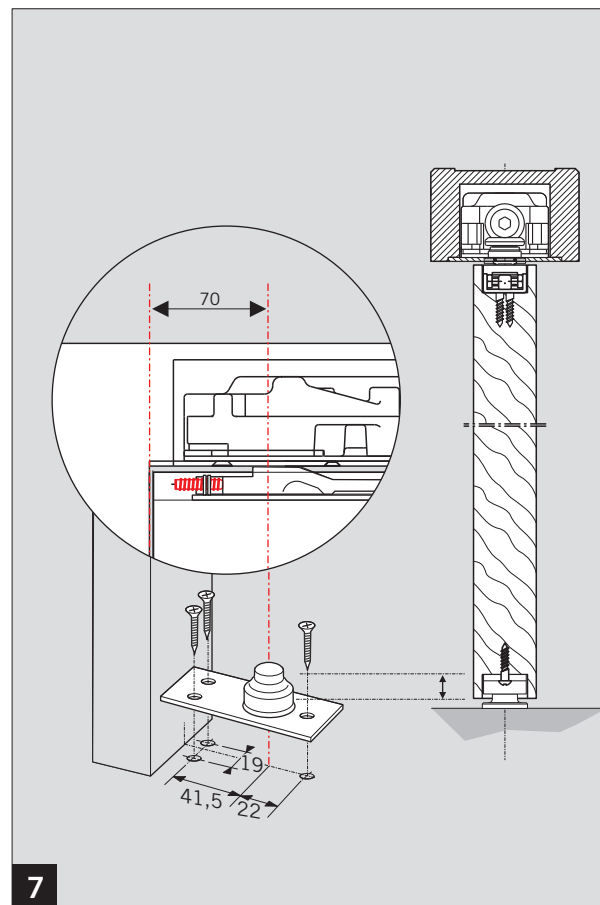
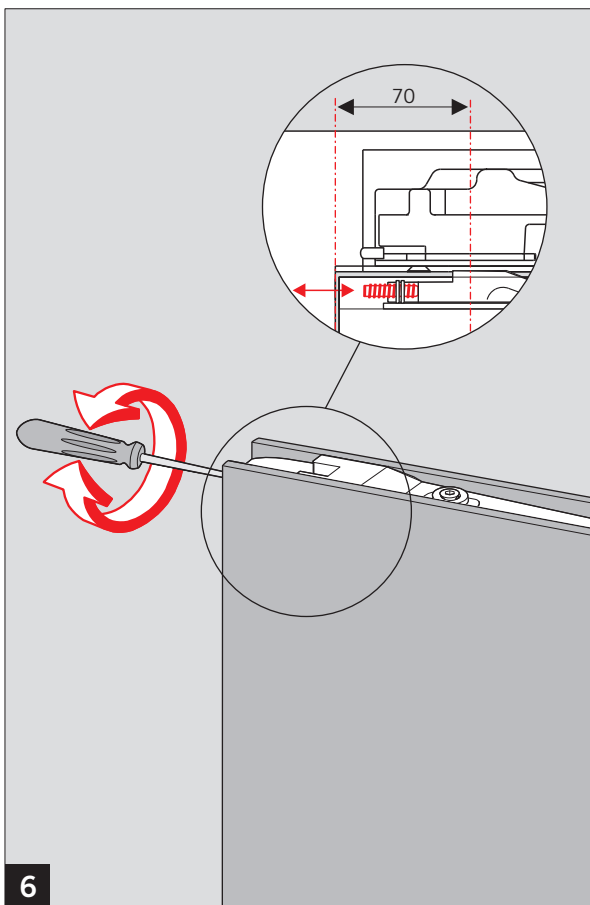
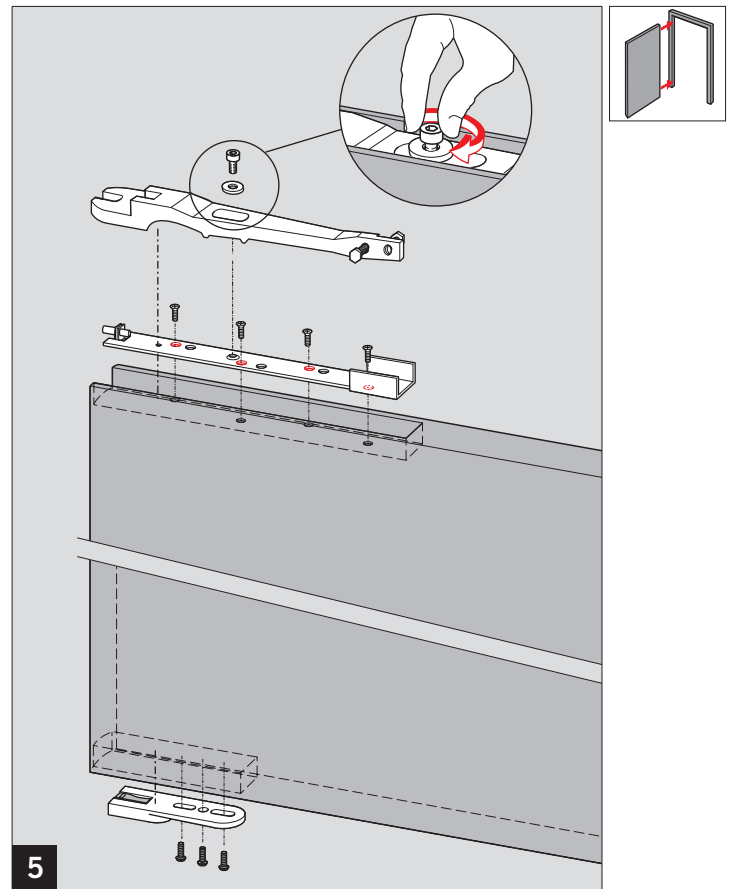
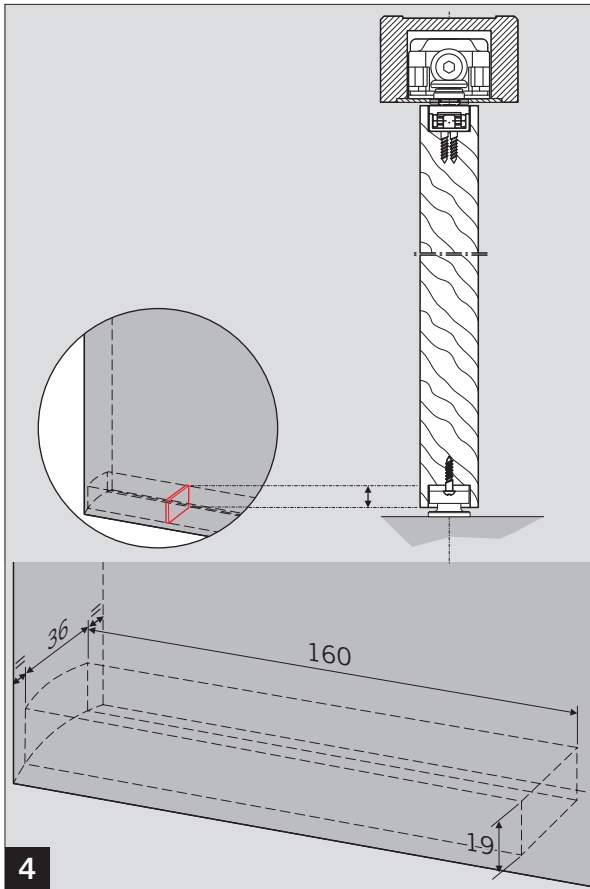
Stirmanontage / End load installation

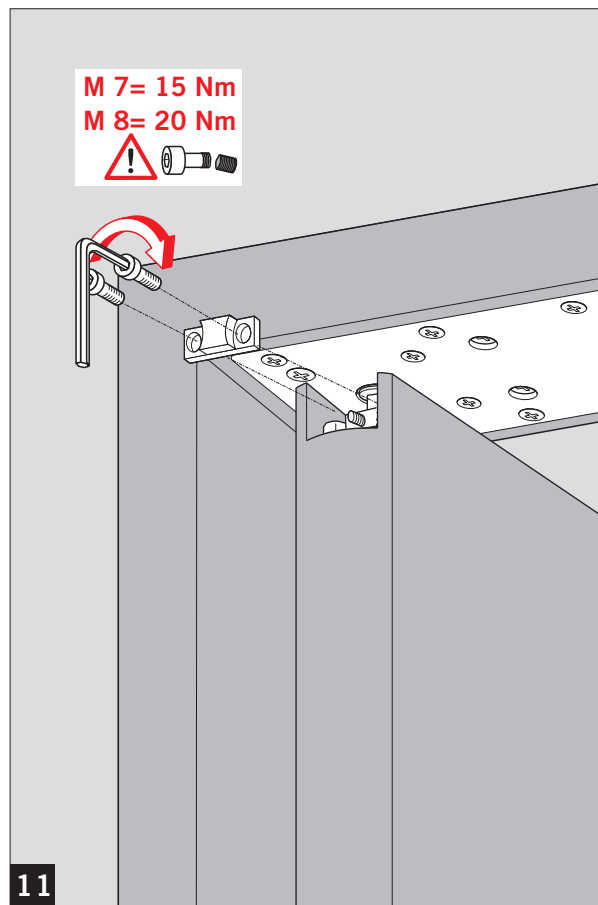
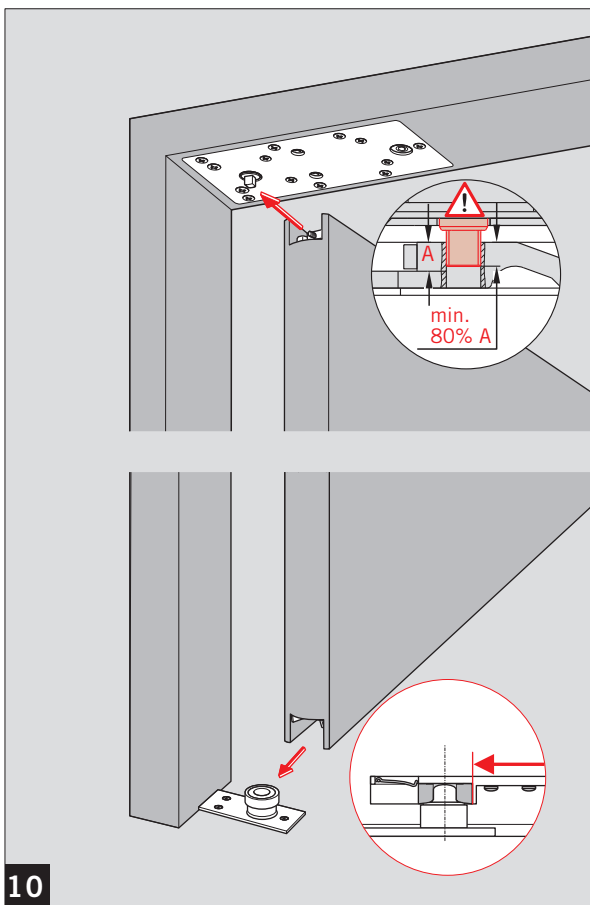
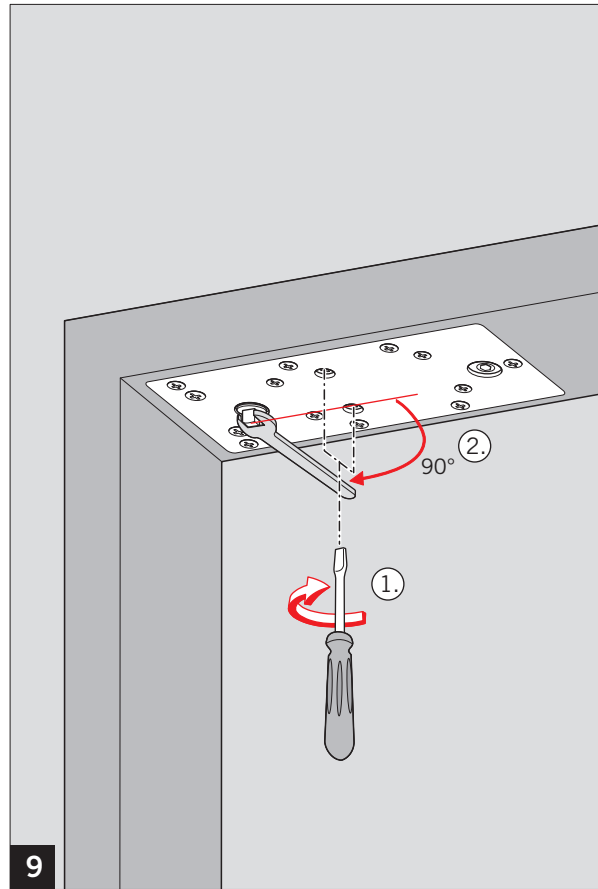
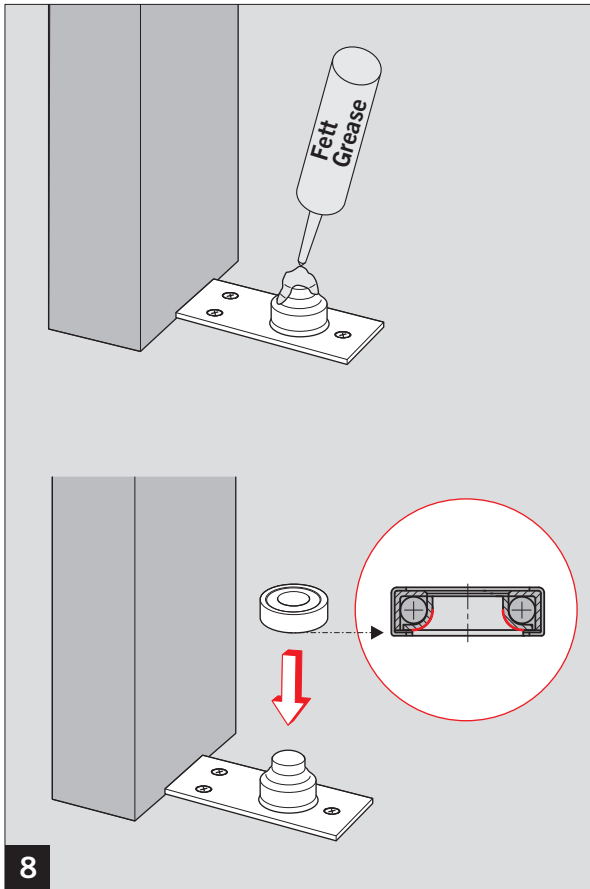


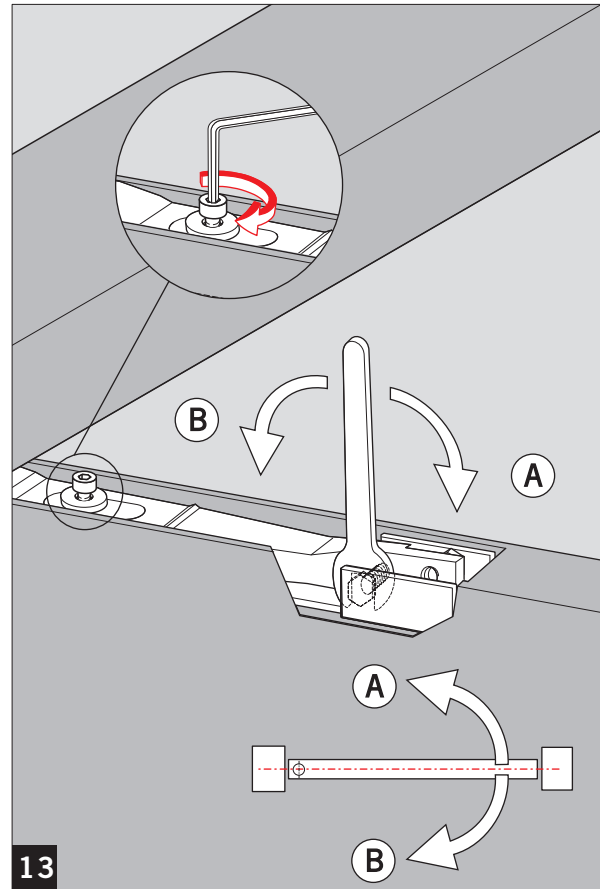
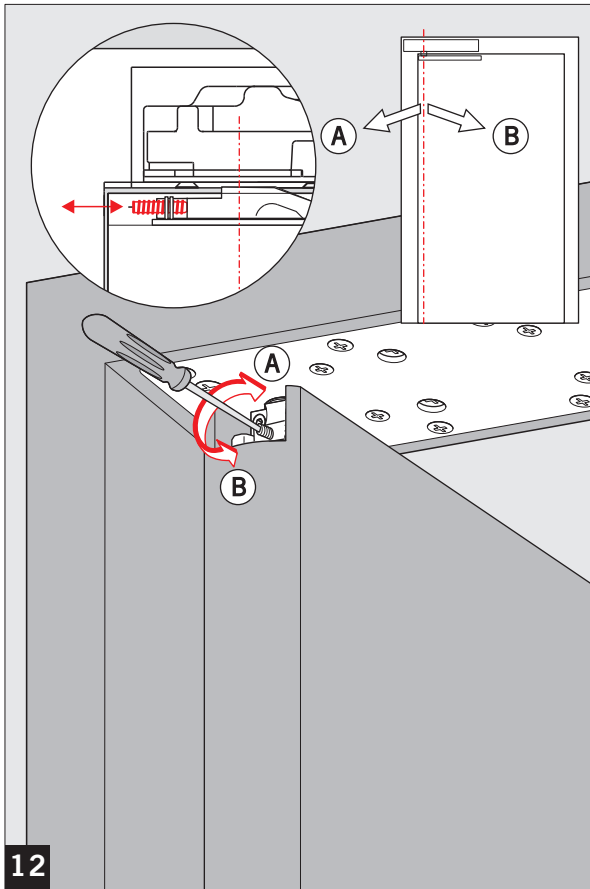
RTS 87

—

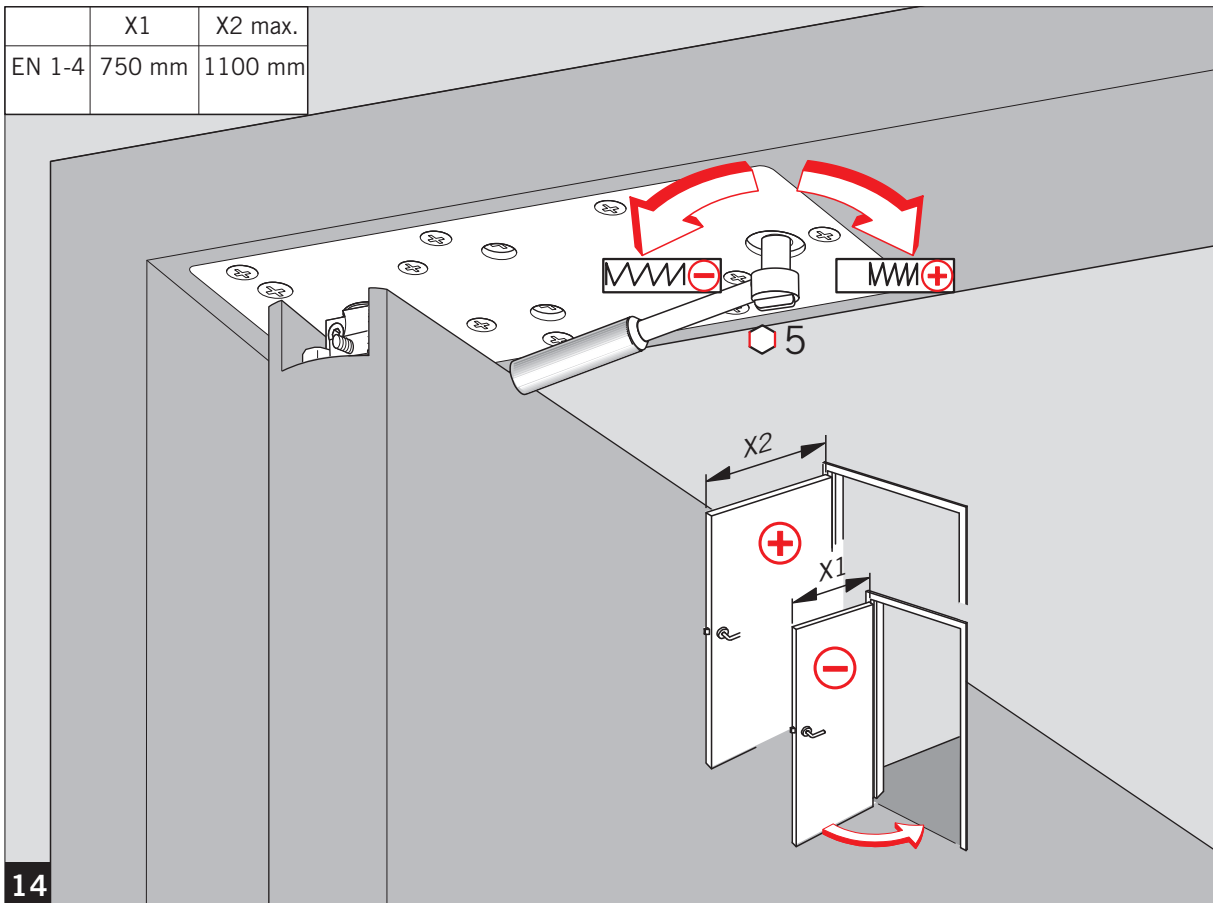
Stirmanlage / End load installation

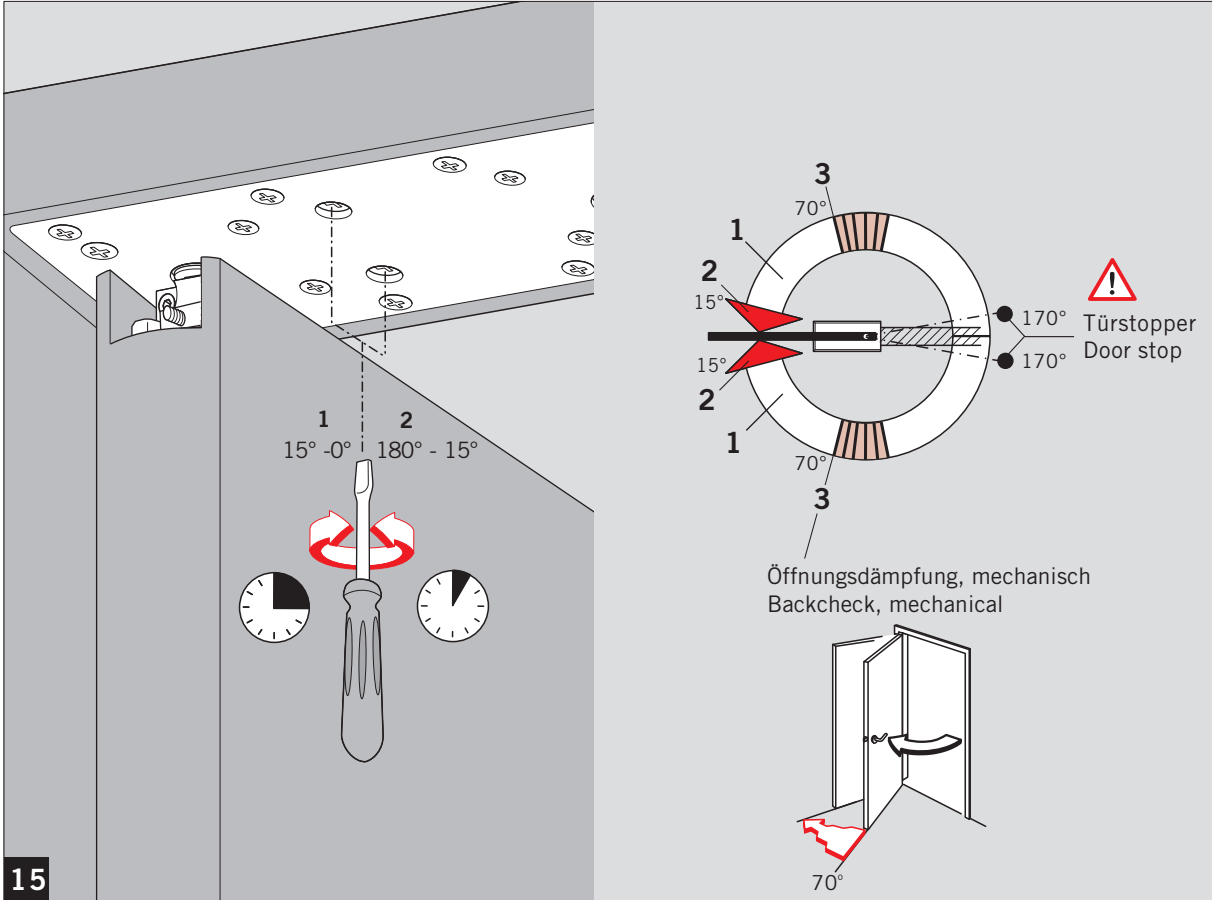






	X1	X2 max.
EN 1-4	750 mm	1100 mm





15