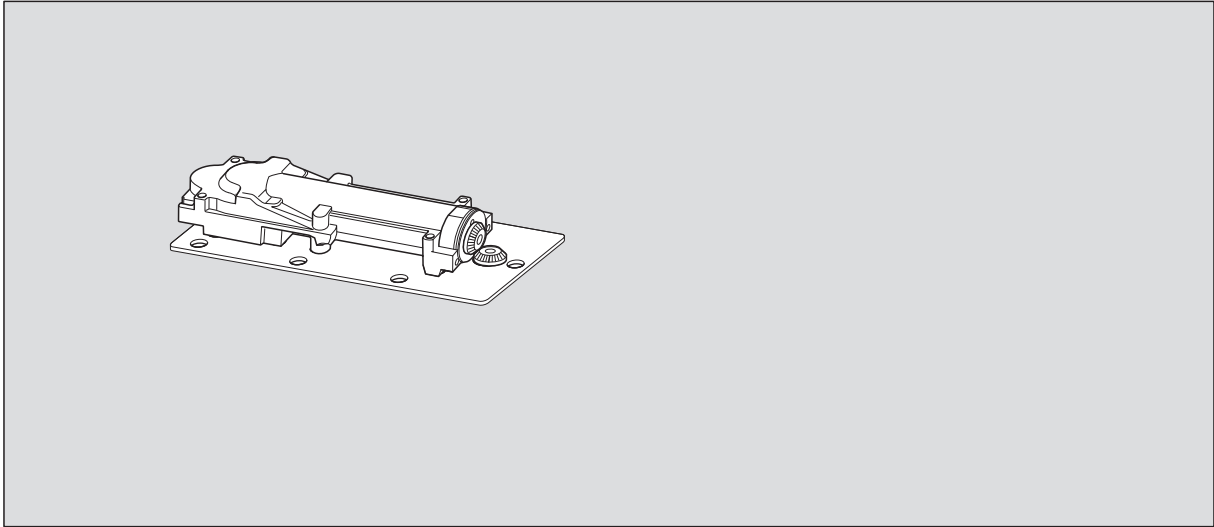
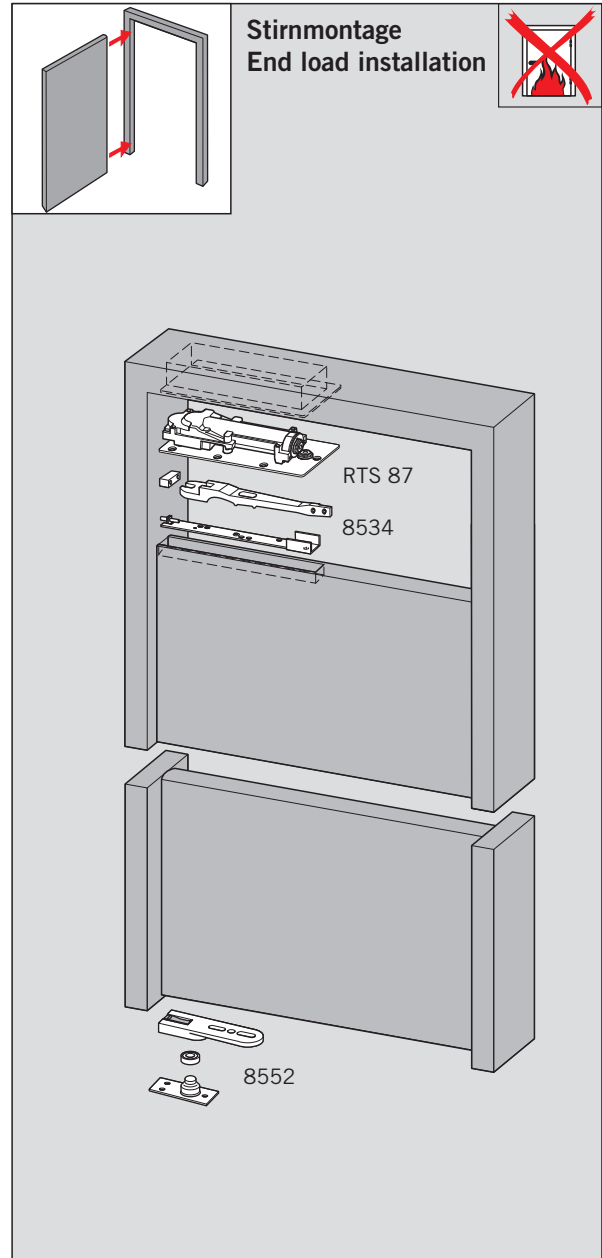
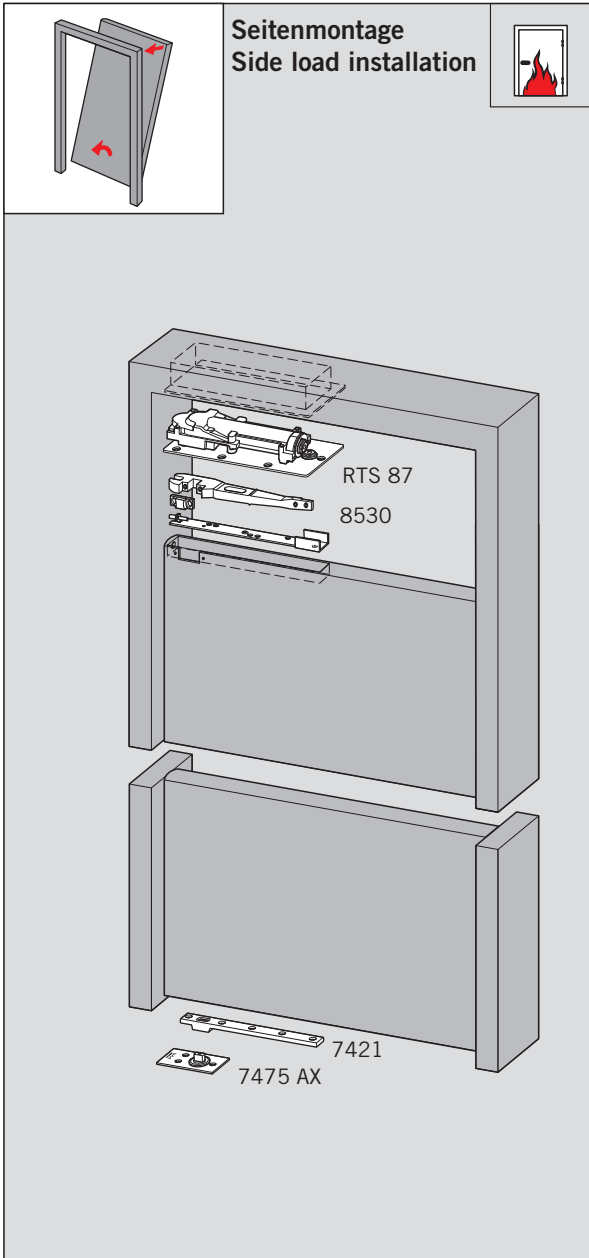
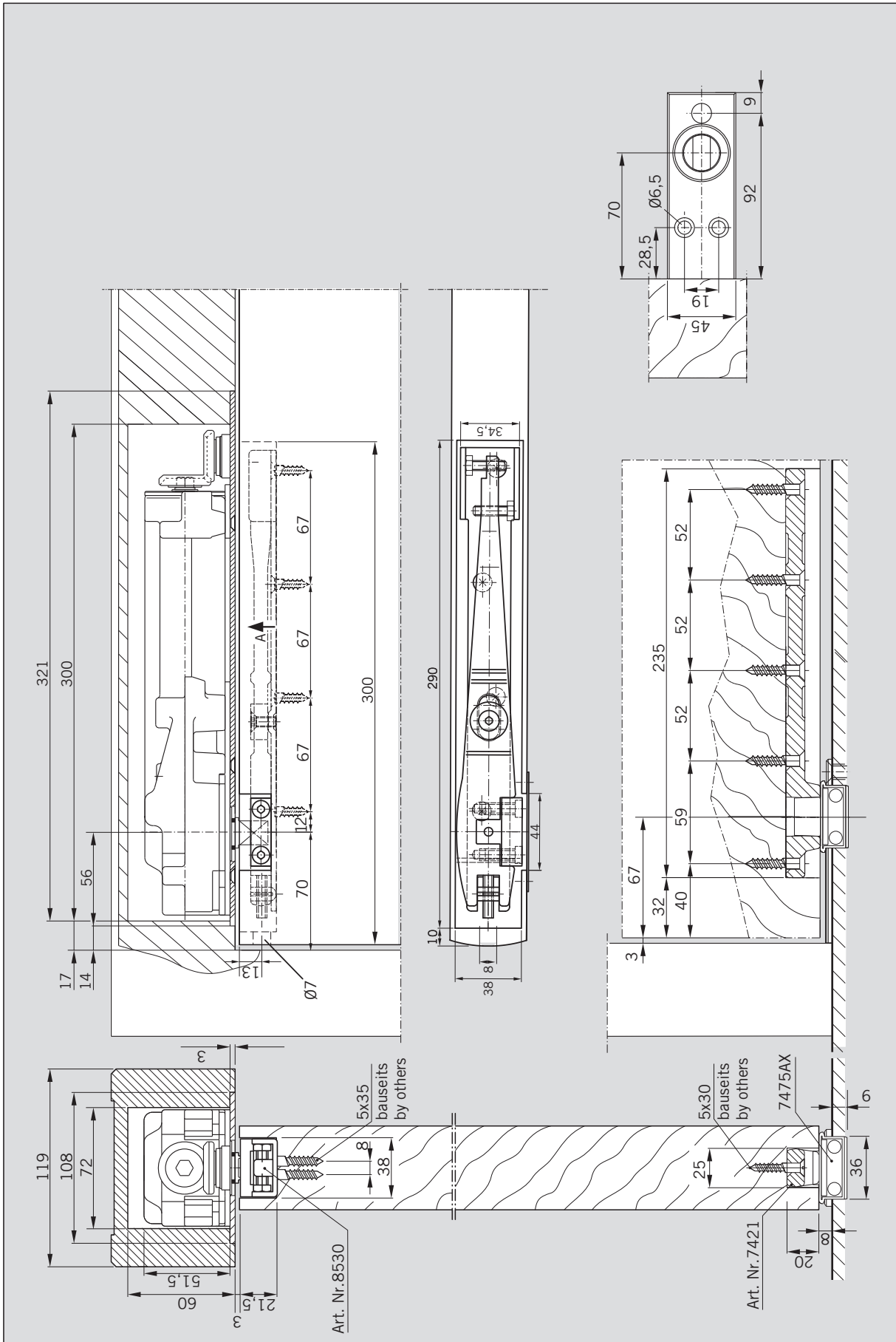
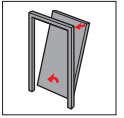


WN 058349 45532, 11/12



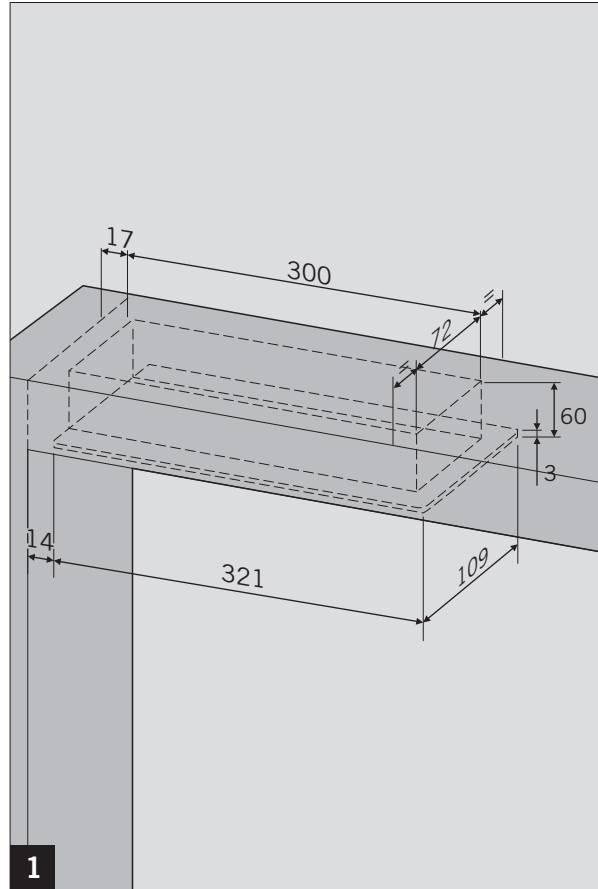
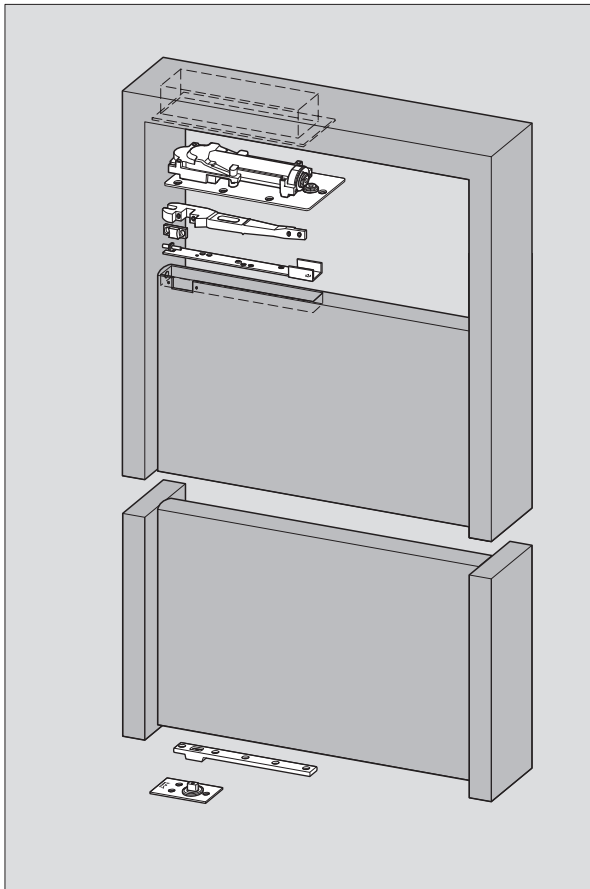
CE	DORMA GmbH + Co. KG		05	
	Postfach 4009 58 247 Ennepetal			
0432 - BPR-0076		EN 1154:1996+A1:2002	3 8	1 4
Dangerous substances: None				



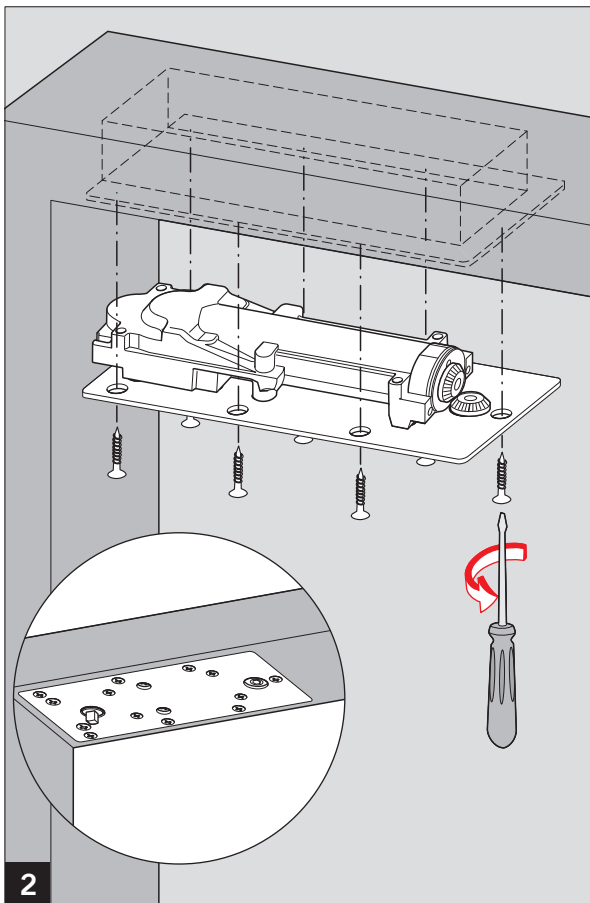


# RTS 87

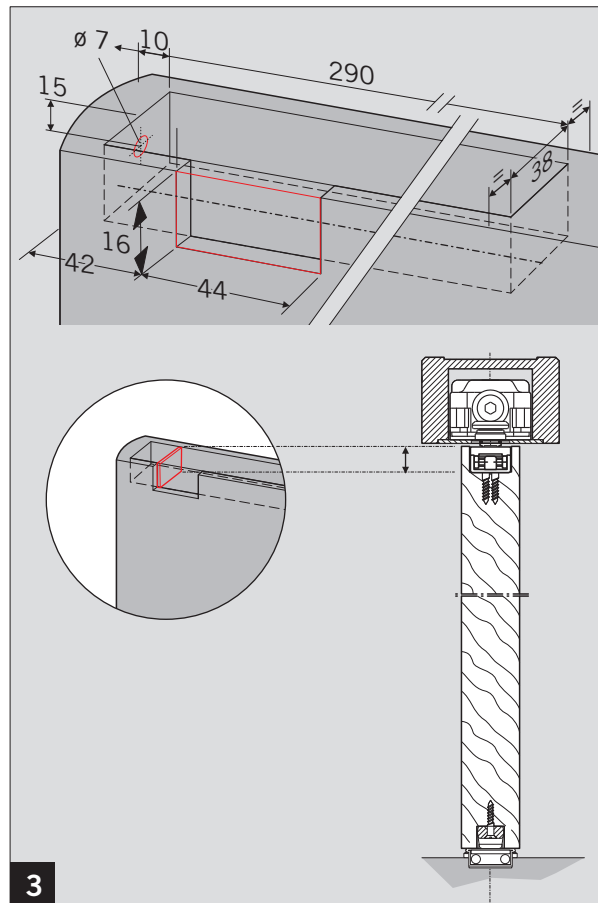
Seitenmontage / Side load installation



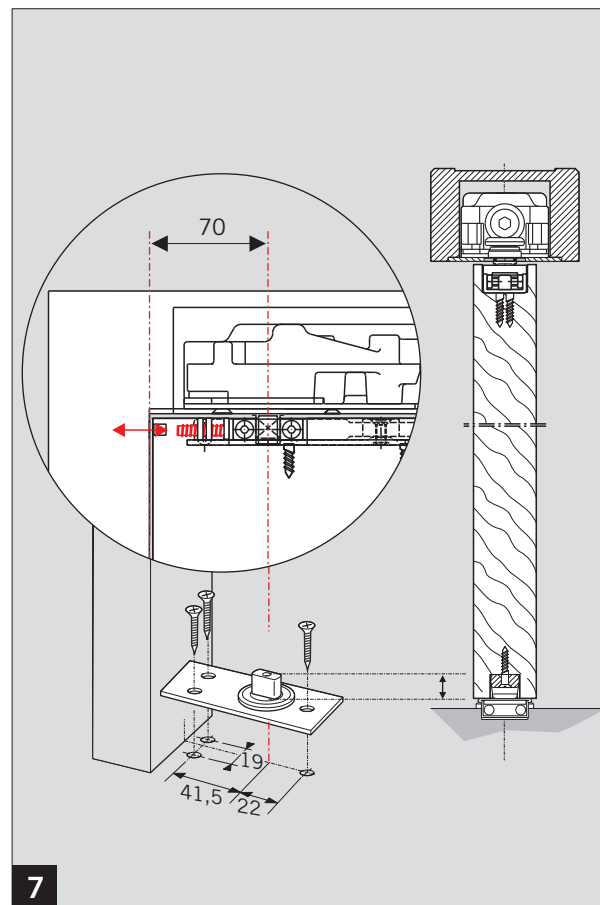
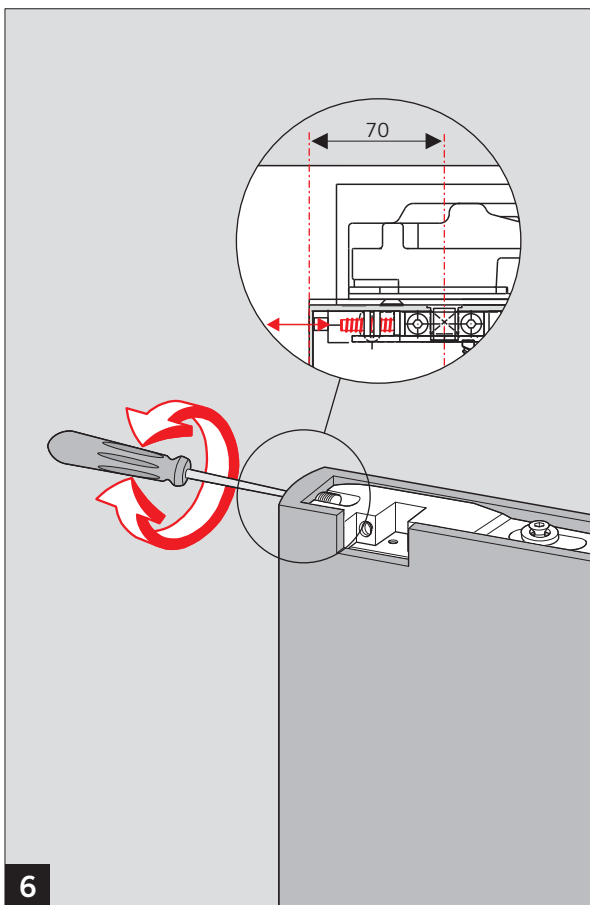
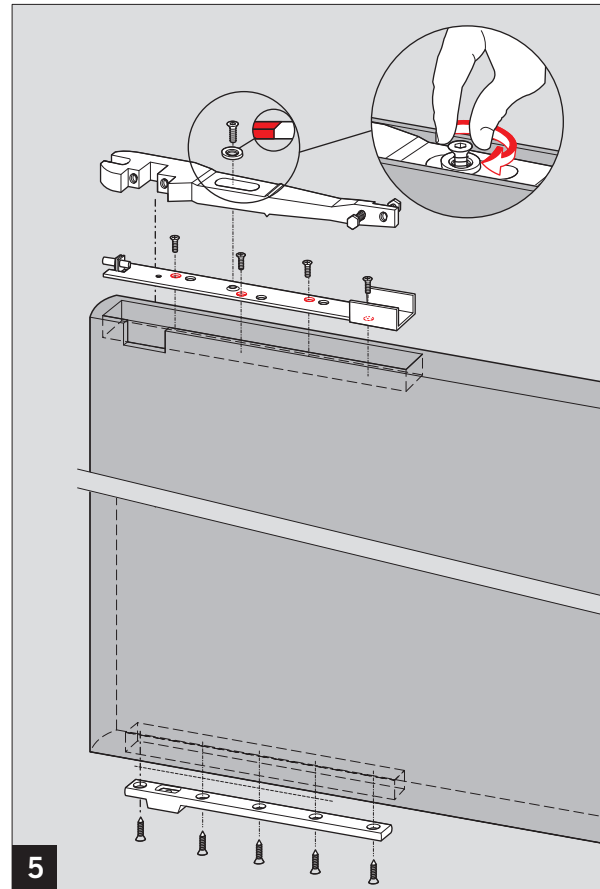
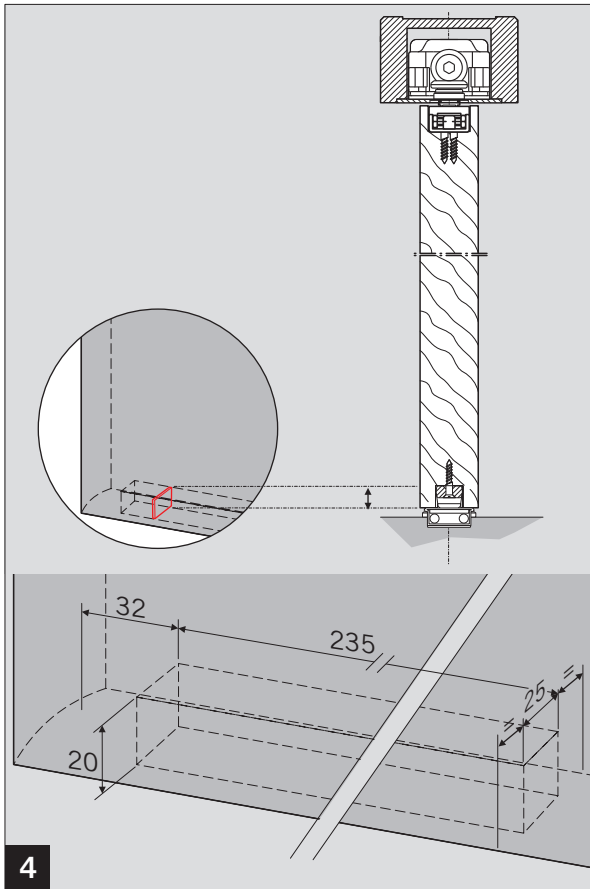
1

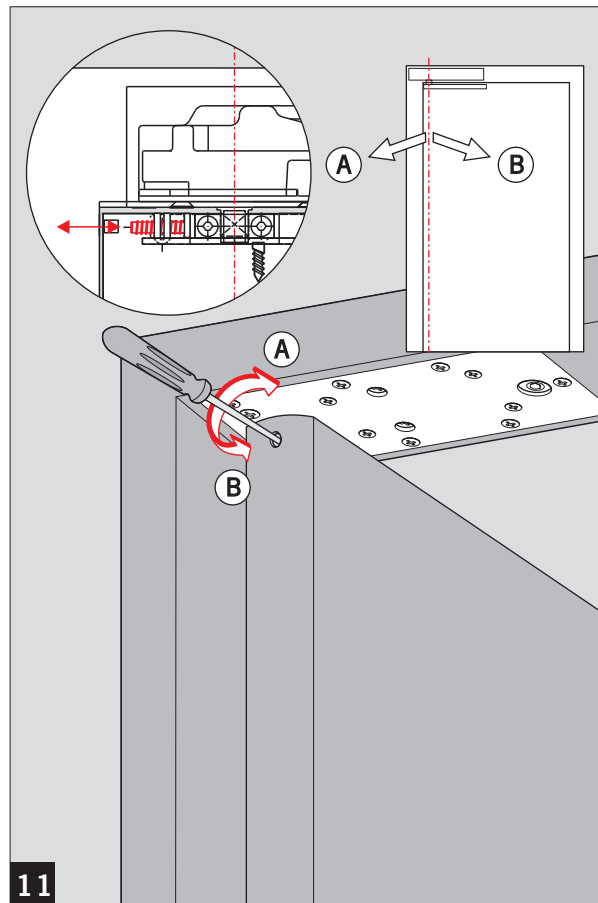
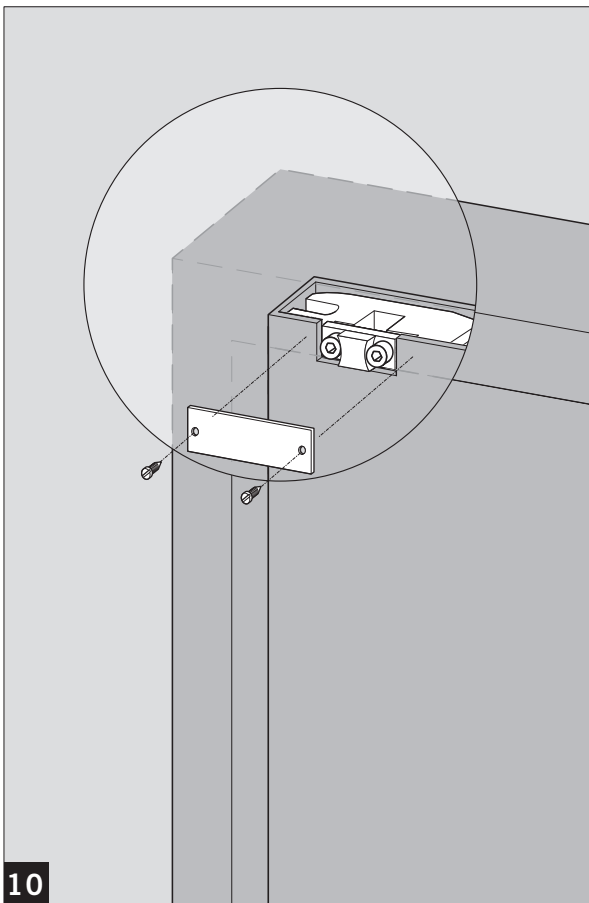
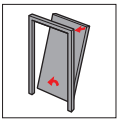
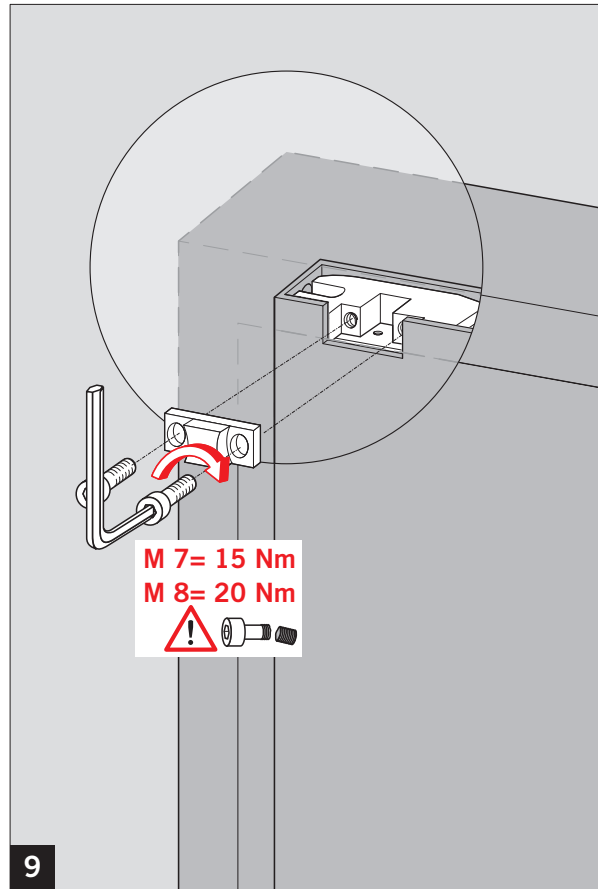
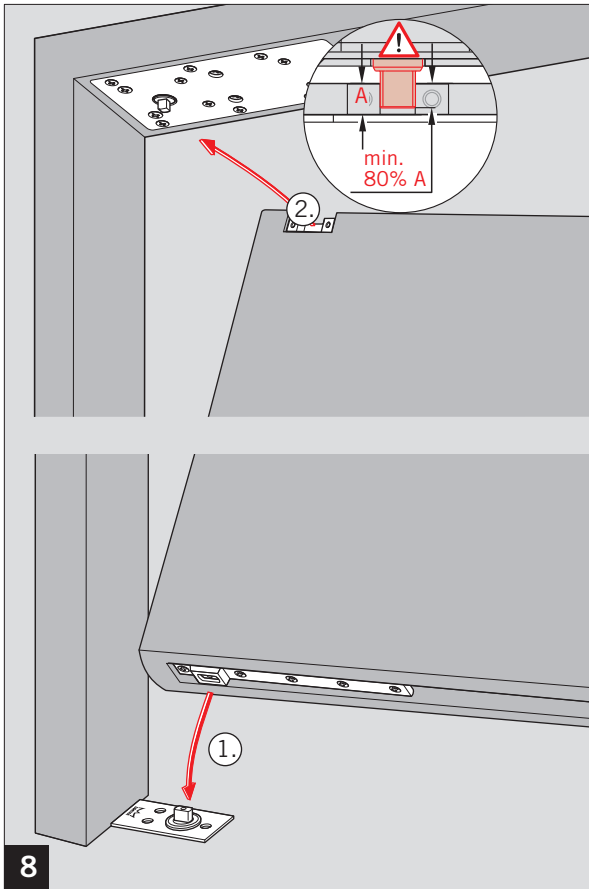


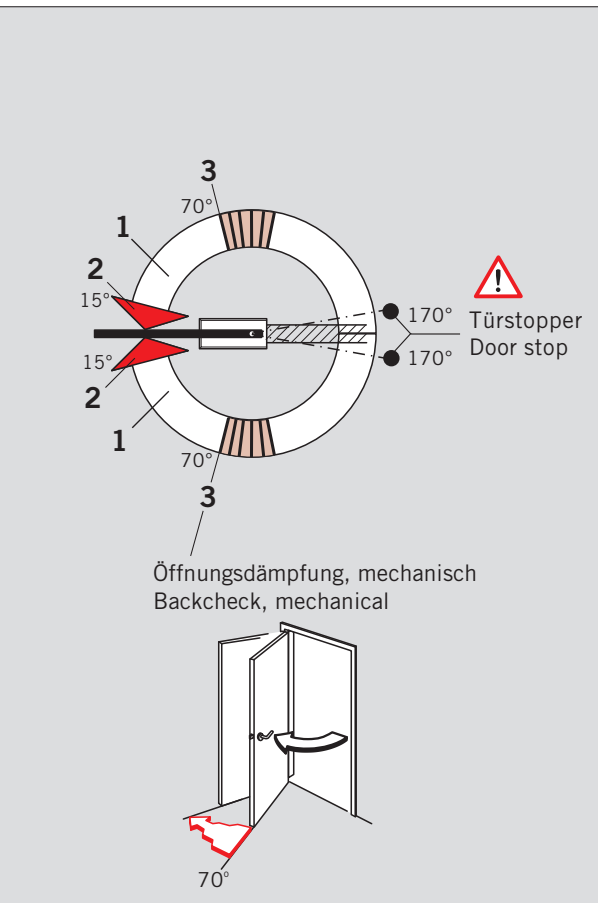
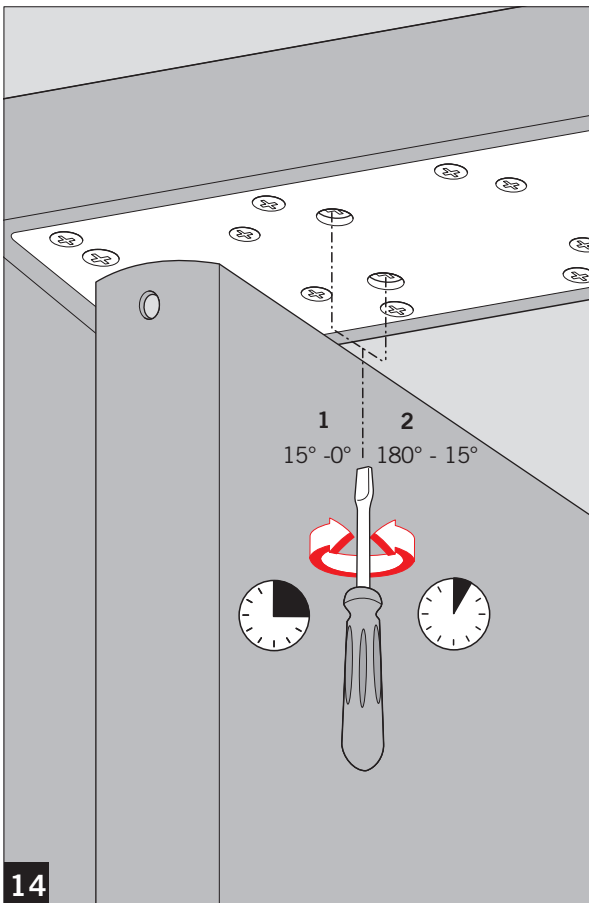
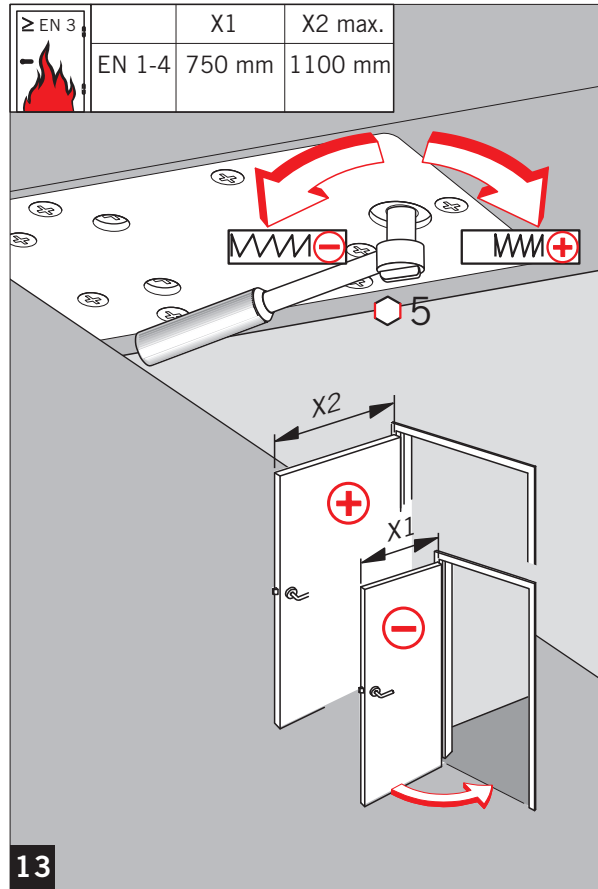
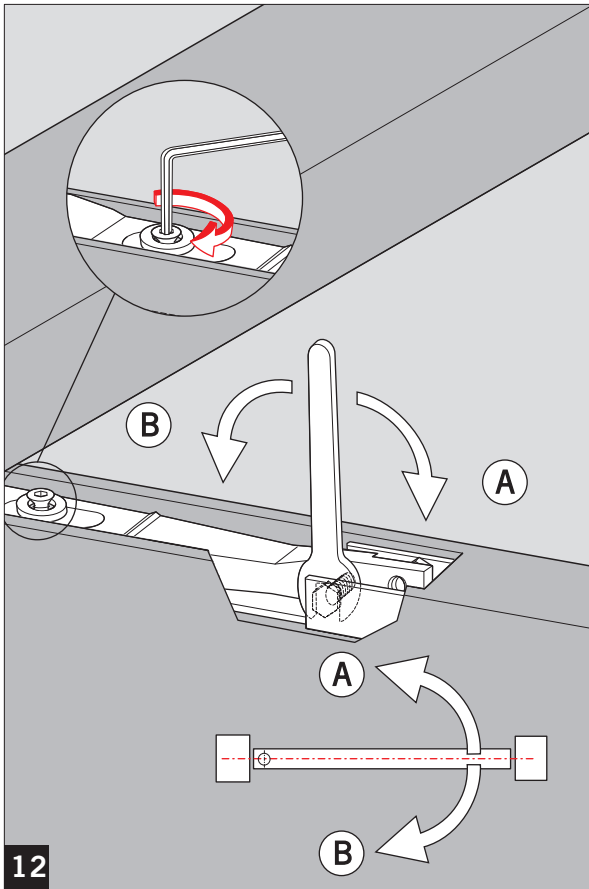
2



3

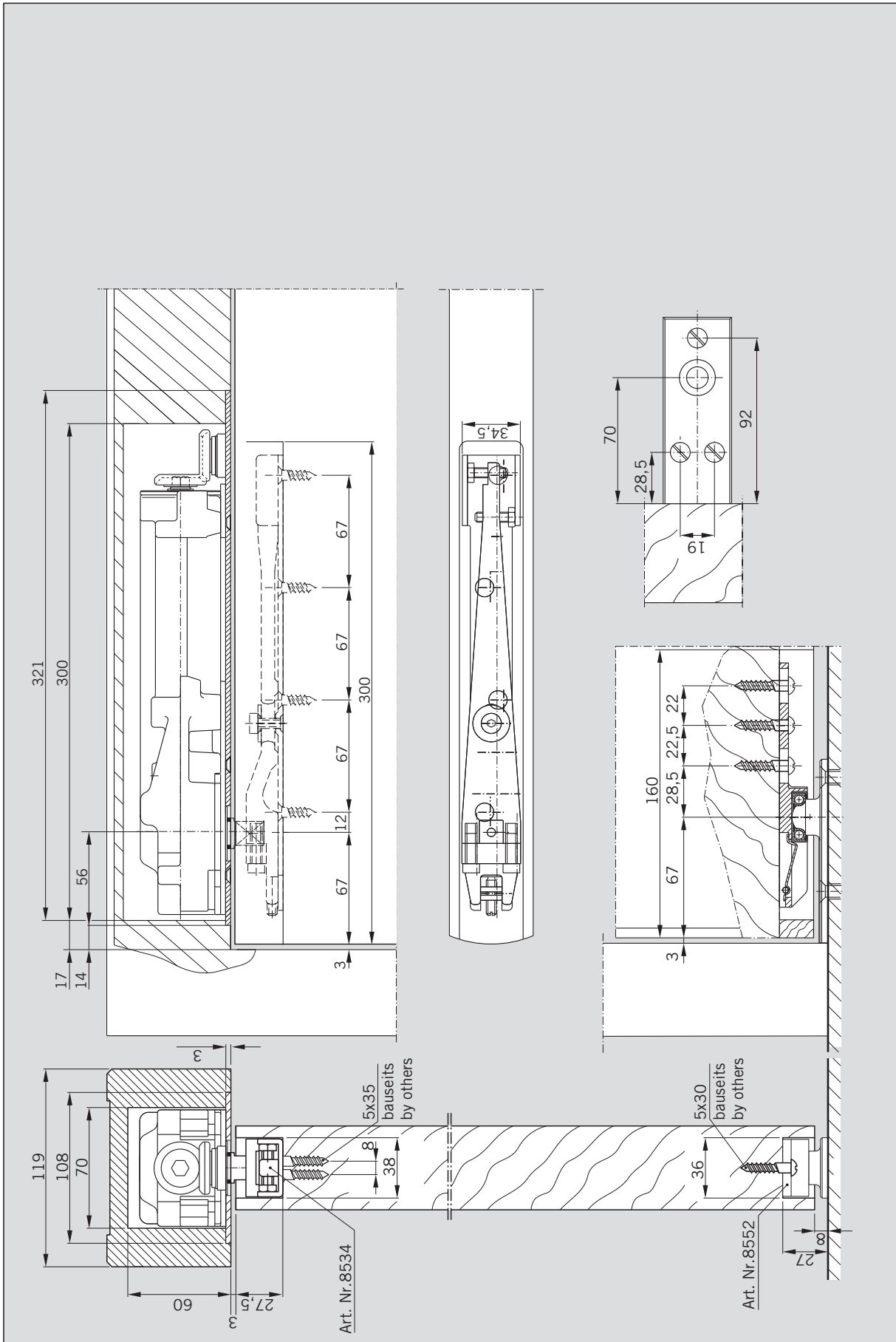
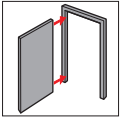






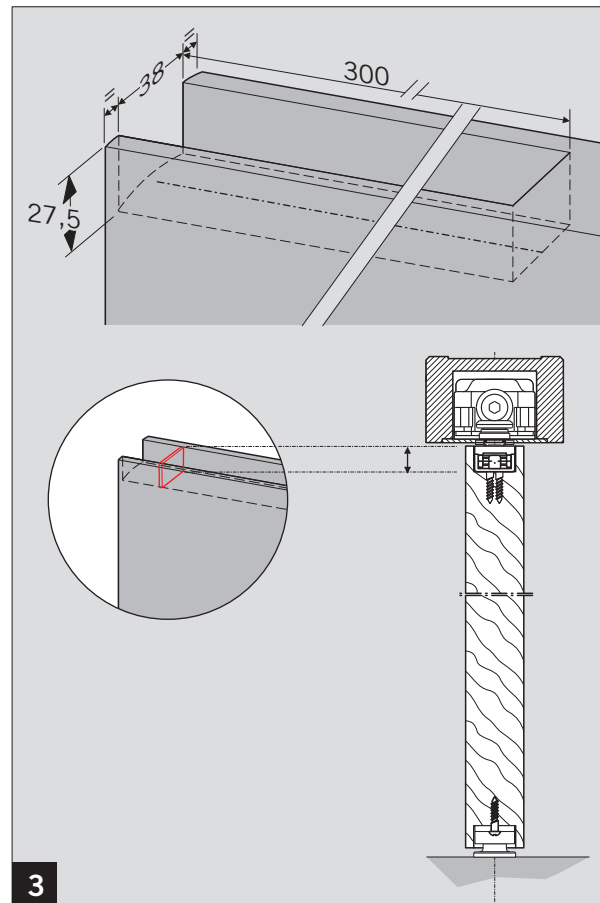
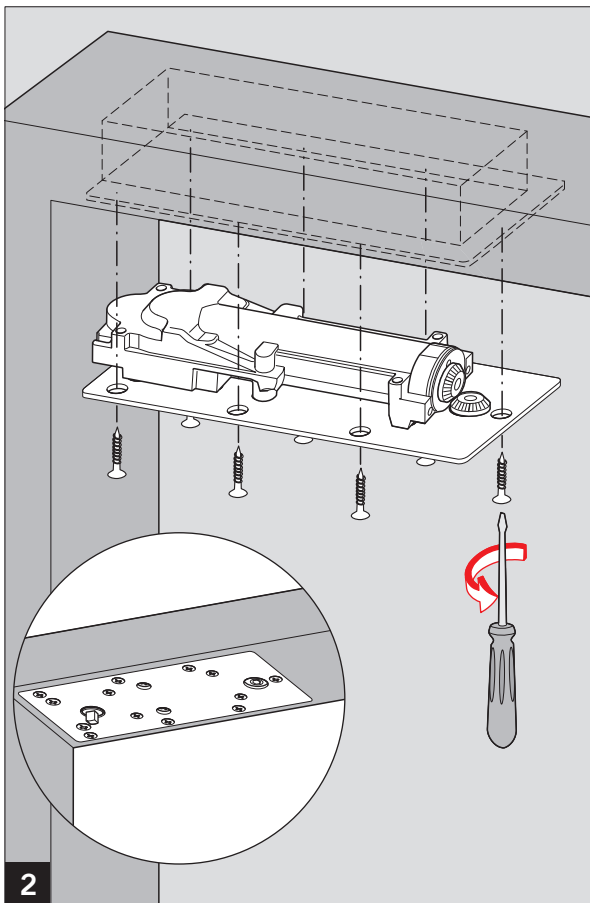
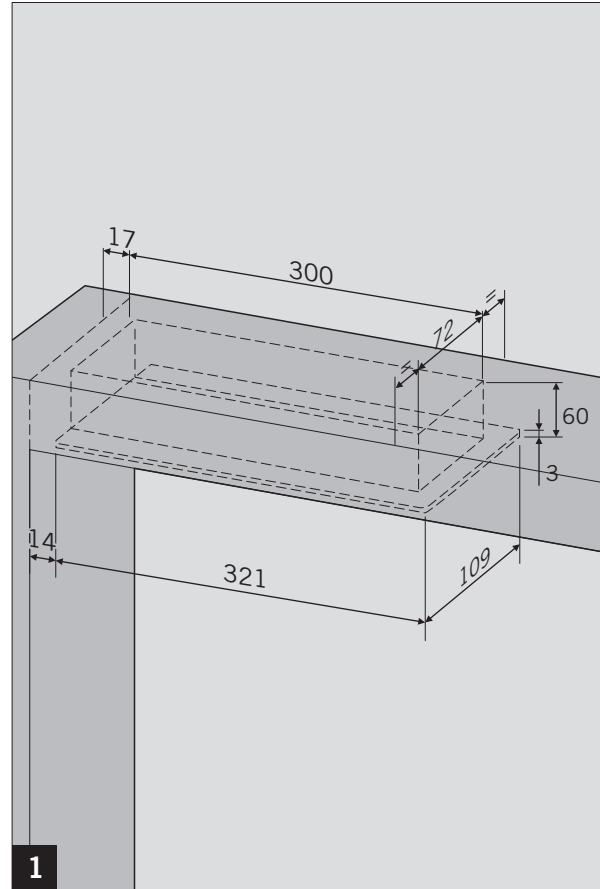
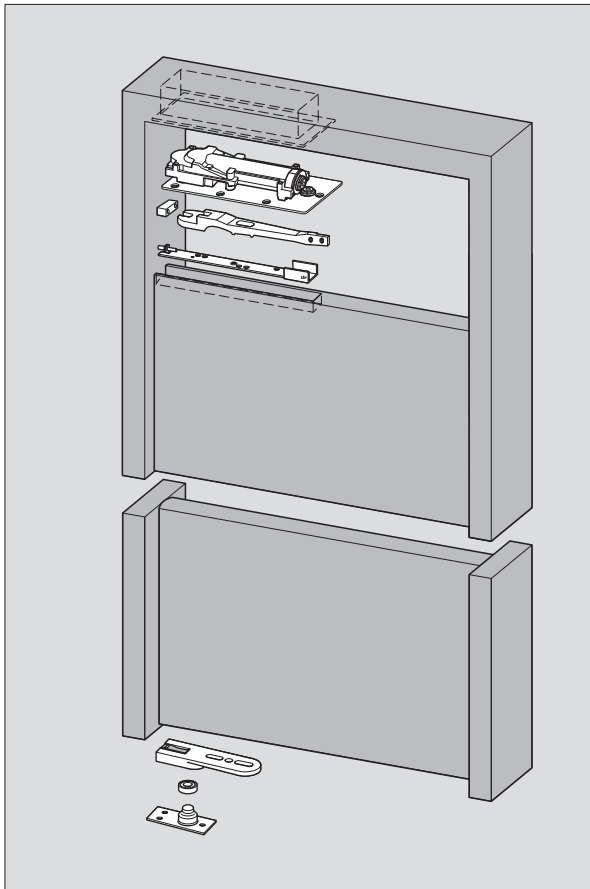
# RTS 87

Stirnmontage / End load installation



# RTS 87

Stirmanontage / End load installation





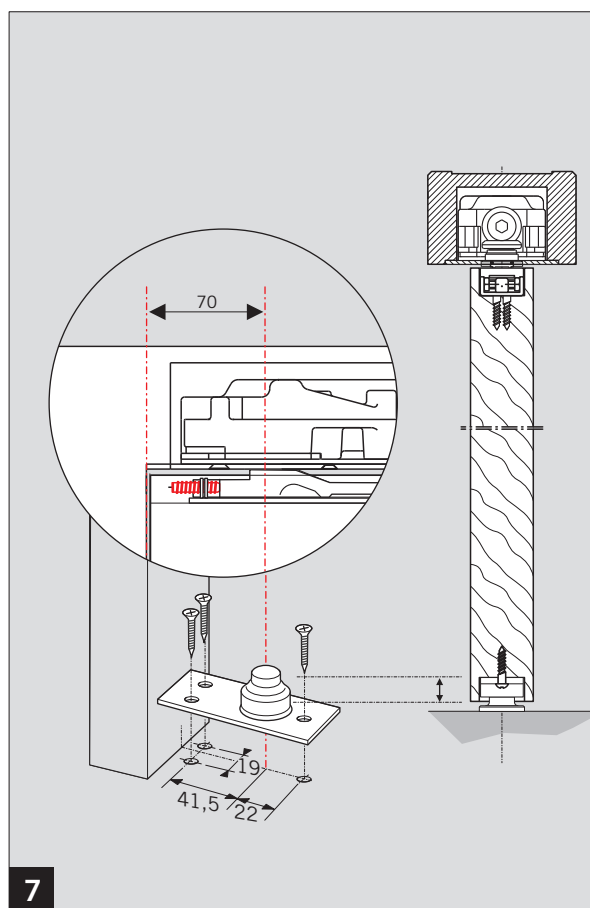
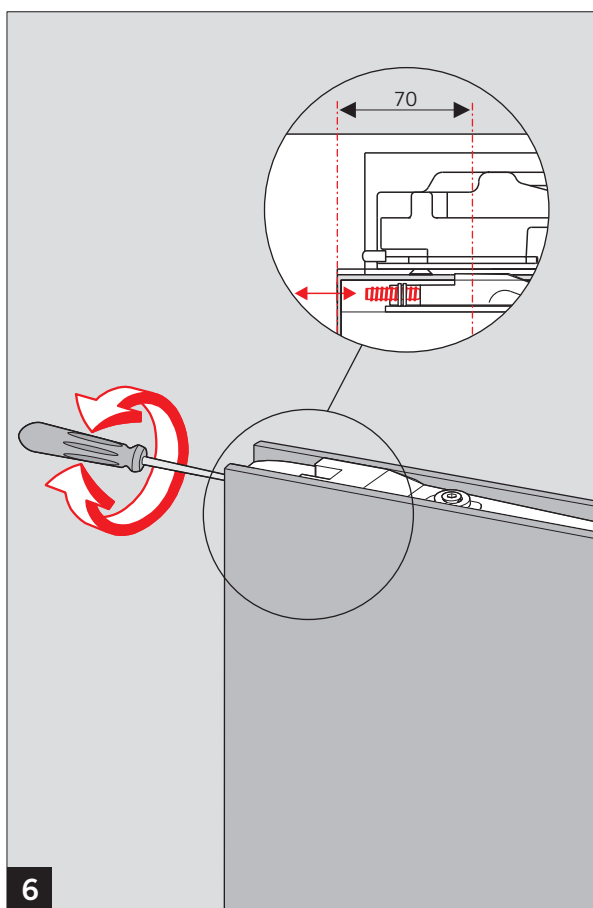
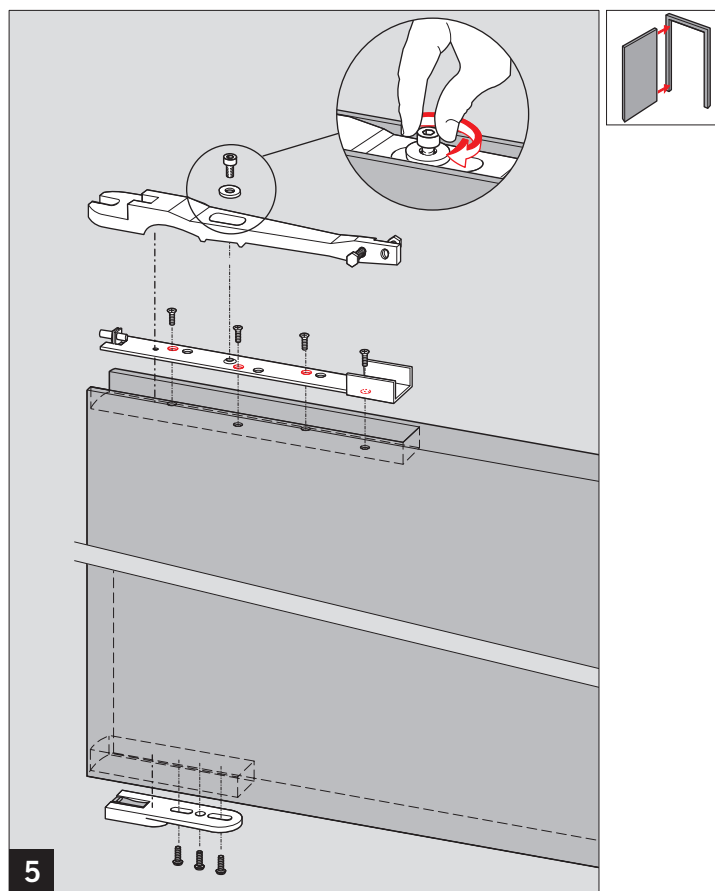
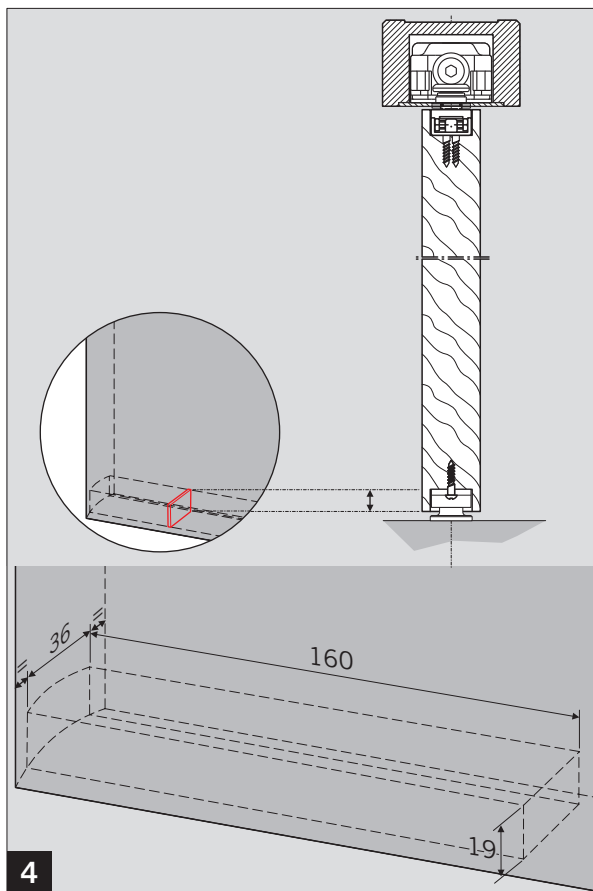
RTS 87

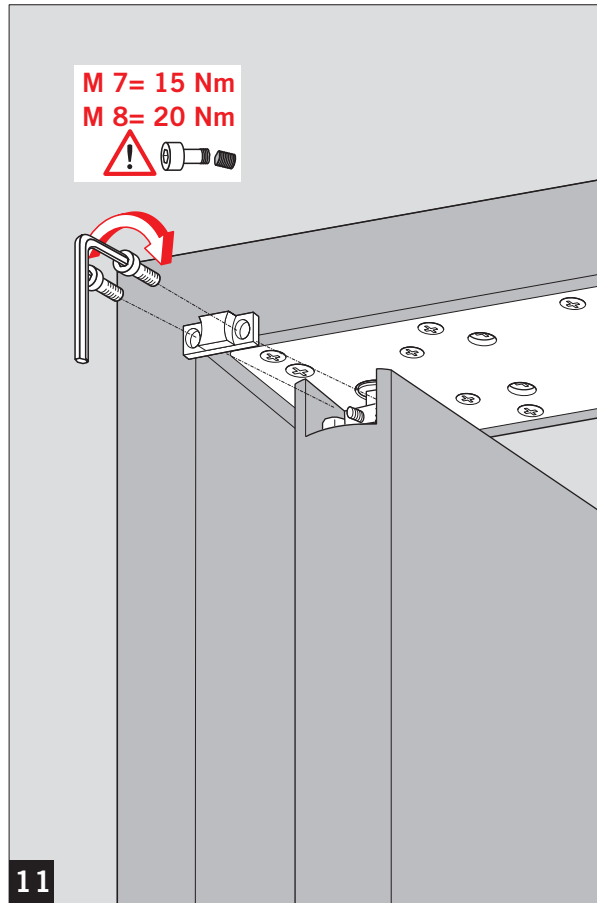
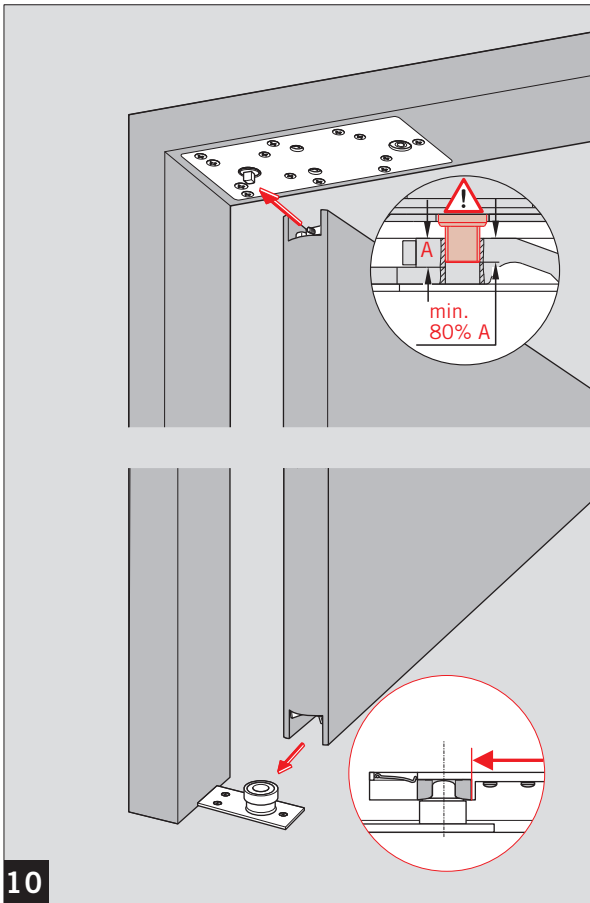
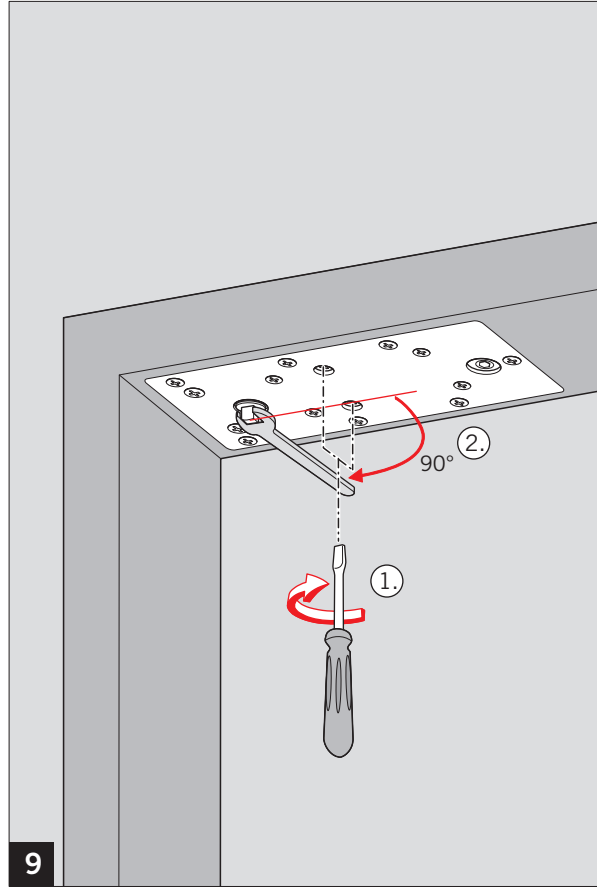
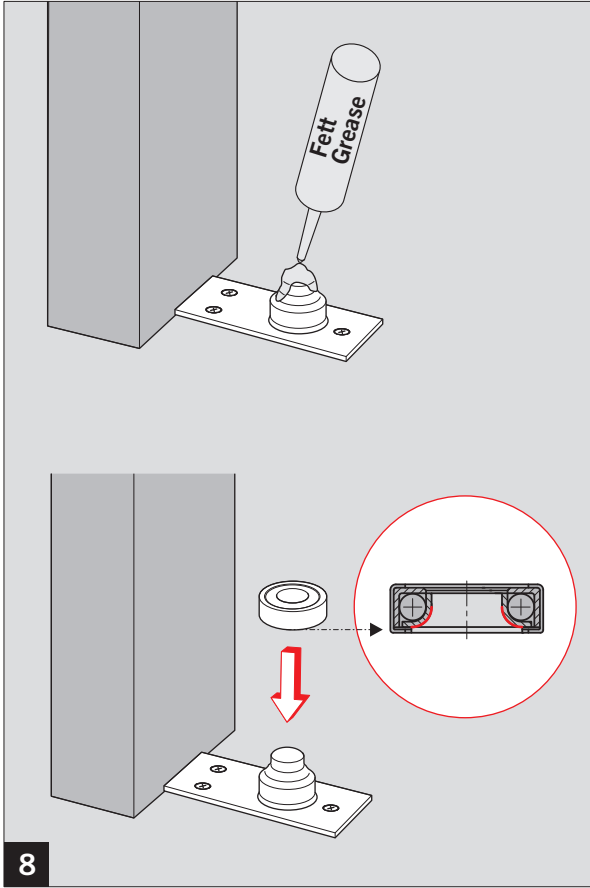
—

Stirnmontage / End load installation

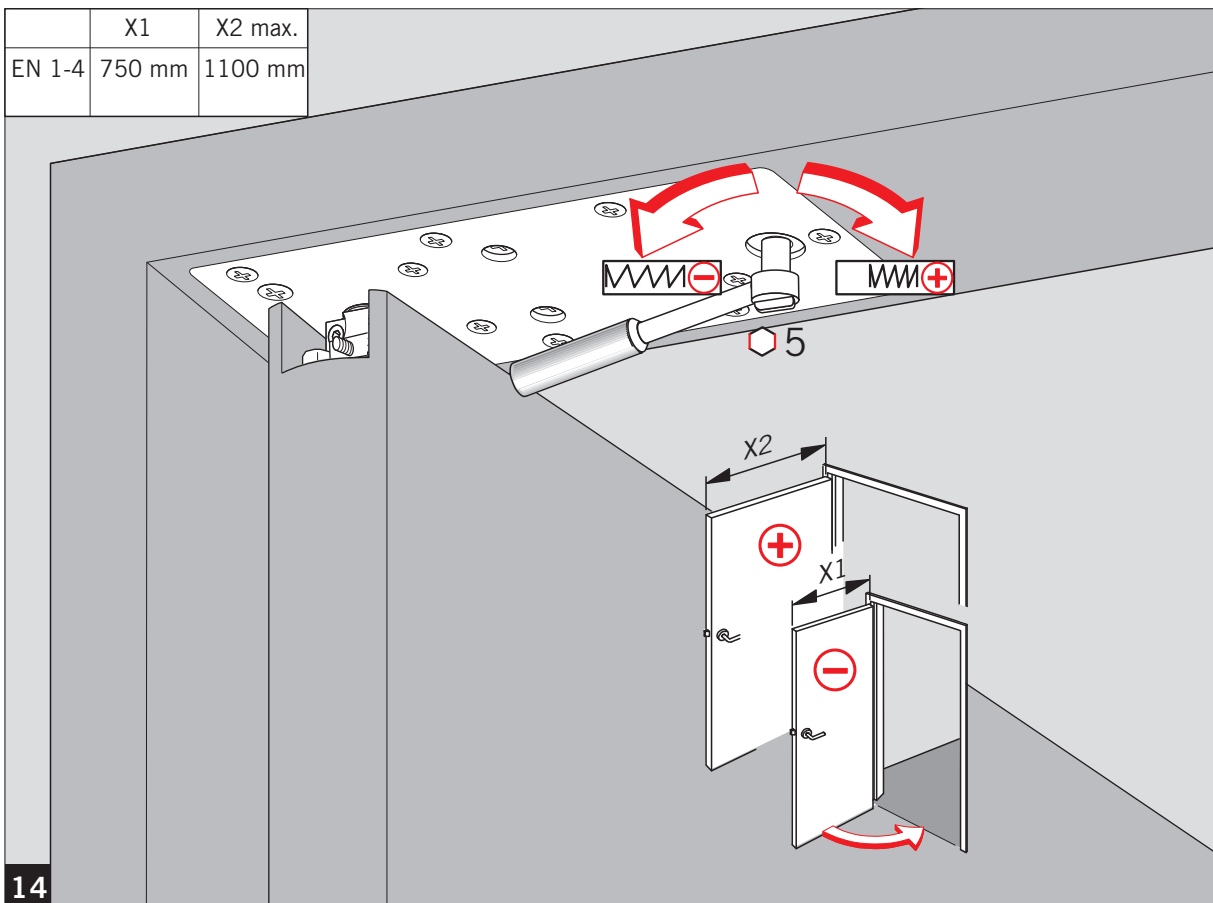
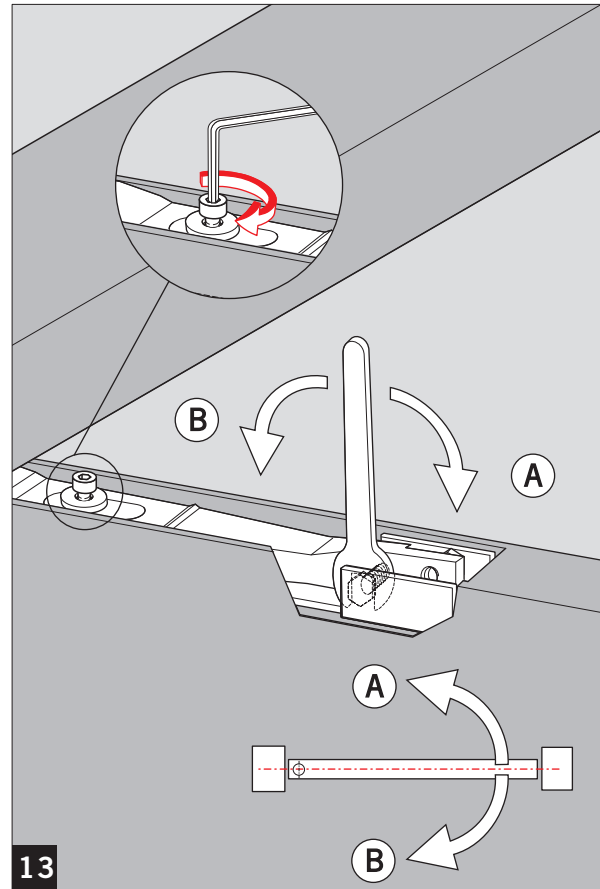
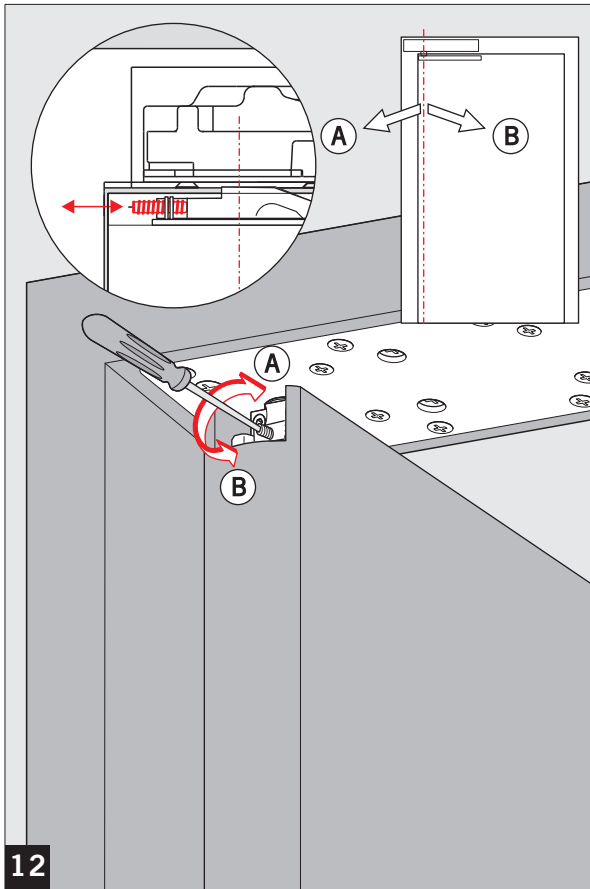
**BJ WALLER**

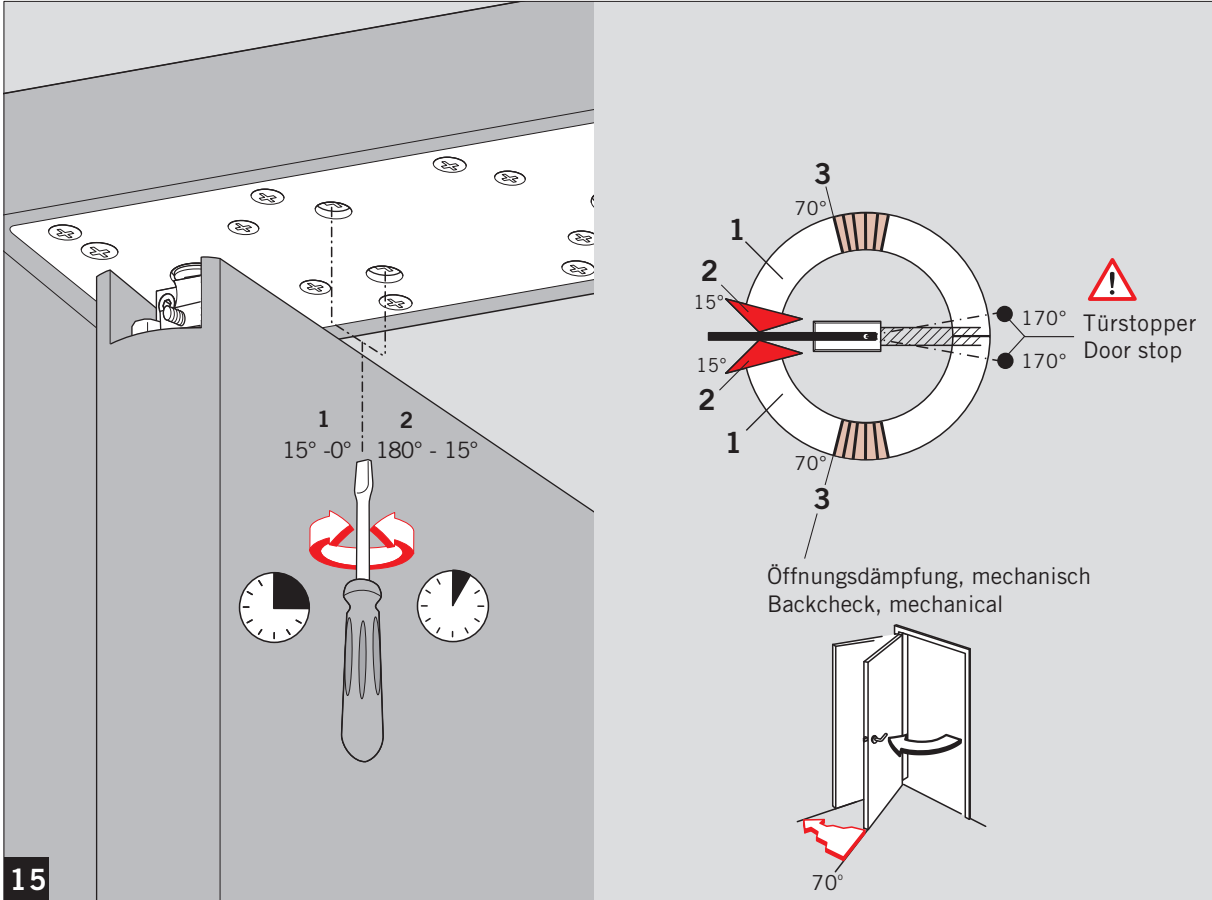
**ARCHITECTURAL IRONMONGERS**





Stirmanontage / End load installation





15